



## *Angus Female Sale*

Sunday • **November 15, 2020** • 1:00 PM

At the Ranch • Earlham, Iowa

**SELLING**

30 Open Heifers • 15 Bred Heifers and Cows

*Janssen Madame Pride 4502* - Lot 1



Including the entire crop of ranch-raised heifer calves, with none held back!



*Jon and Maradith Janssen  
Family*



**Jon & Maradith Janssen**

36251 Hull Ct. • Earlham, IA 50072

(515) 468-8221

[janssenangus.com](http://janssenangus.com)

[janssenangus1477@gmail.com](mailto:janssenangus1477@gmail.com)

[janssenangus.com](http://janssenangus.com)

Welcome to the Fall 2020 Janssen Angus Female Sale! Maradith and I and our three children are excited to have the opportunity to sell our entire 2020 heifer calf crop in this year's sale! What an excellent opportunity to invest in the best females born in our operation, not just a select few that we chose to sell! When breeders decide to hold nothing back it becomes a buyer's opportunity to advance their herd exponentially with this one generation!

While the open heifers are definitely the feature in this year's auction, we are proud to be offering an awesome selection of cows including two of our all-time income producers, Janssen Madame Pride 4502 and Janssen Madame Pride 5102! This is a rare opportunity to own these true breed leaders both in the prime of their lives!

I truly believe that investing in Angus genetics that are backed by the breed's most solid cow families is and always will be the closest thing to a "sure bet" in American Agriculture. We are so blessed to have been born in the greatest country in the history of the world where we can pursue our dreams, raise our families under the flag of freedom and live the life that is the envy of the globe!

Please plan to join us November 15th for a day of Angus fun and celebration!

Your Angus Friend,  
Jon Janssen

***The Janssen Angus Sale facility is located  
less than 20 miles west of Des Moines, Iowa.***







## Angus Female Sale

Sunday • **November 15, 2020** • 1 PM  
At the Ranch • Earlham, Iowa

**SALE DAY PHONES:** Jon Janssen cell - (515) 468-8221  
Tom Burke cell (816) 853-2697 • Kurt Schaff cell - (816) 520-6447  
Jeremy Haag cell (816) 516-1309

### AUCTIONEER:



Joe Goggins

### SALE MANAGER:

American Angus Hall of Fame - (816) 532-0811  
Tom Burke Kurt Schaff Jeremy Haag  
(816) 853-2697 (816) 520-6447 (816) 516-1309

Buyers unable to attend the sale may send their bids to the Sale Manager, Regional Manager, Field Representatives or Auctioneer.

### LIVESTOCK PUBLICATION REPRESENTATIVES:

Adam Conover, *Angus Journal*  
Scott Crawford, *Midwest Marketer*  
Tom Rooney, *Midwest Marketer*

**SALE CONSULTANT:** Jeremie Ruble (406) 581-7940

**DIRECTIONS TO THE SALE SITE:** The new, heated Janssen Angus Sale Headquarters is located at 1070 Pitzer Road, Earlham, Iowa, 50072. Take the 100 exit off of Interstate 80, roughly 20 miles west of Des Moines, then go south approximately 1.5 miles to sale headquarters, located on county highway P53.

### ACCOMMODATIONS:

AmericInn - Stuart Iowa - (515) 523-9000. 9 miles from sale headquarters.  
America's Best Value Inn and Suites - Stuart Iowa - (515) 523-2888. 9 miles from sale headquarters.  
Hampton Inn - West Des Moines Iowa - (515) 223-4700. 23 miles from sale headquarters.  
Holiday Inn Hotel and Suites - West Des Moines Iowa - (515) 309-3900. 23 miles from sale headquarters.

**TRANSPORTATION:** Des Moines International Airport is served by numerous carriers and direct flights from metro areas across the US and Canada. Janssen Angus sale headquarters is 30 miles from Des Moines International Airport. Omaha International Airport is roughly 100 miles from Janssen Angus and served by same carriers as Des Moines.

Both airports are equipped with rental car vendors and free hotel shuttles to most Des Moines/West Des Moines hotel chains, but early ticket and room booking is highly recommended, as Iowa Beef Expo is going on the week of Janssen Angus sale which fills hotels and rental vendors.

**TERMS AND CONDITIONS:** The entire sale offering is guaranteed to be reproductively sound in accordance with the terms and conditions as recommended by the American Angus Association. ([http://www.angus.org/Pub/suggested\\_sale\\_terms.pdf](http://www.angus.org/Pub/suggested_sale_terms.pdf)). In the event of a problem, the buyer is responsible to contact Janssen Angus immediately, return the animal to Janssen Angus and if it does not respond as a satisfactory breeder, the buyer will have the option to select a suitable replacement or take a sale credit.

**SIGHT UNSEEN PURCHASES:** If you are unable to attend the sale, but want to place a bid, please call Jon Janssen, Kurt Schaff or the auctioneer or sale representatives. We will handle your bid as if it were our own personal investment and your satisfaction is completely guaranteed!

**CATTLE VIEWING:** Anyone wishing to see the sale offering is welcome at any time. Please call in advance to set up a time to view cattle at the farm. All sale cattle will be available to view the entire week before the sale at the Janssen Angus Sale Headquarters.

**VIDEO:** A prerecorded video of each animal will be available a couple of weeks prior to the sale on the Janssen Angus website.

**SALE ORDER:** Sale order will be posted on our website prior to auction day.

### SUPPLEMENTAL INFORMATION:

A supplemental sheet will be available sale day with complete and up-to-date information. Announcements from the auction block take precedence over sale book information.

**HERD HEALTH:** All cattle will be accompanied by proper health certificates for immediate shipment.

**TRUCKING:** Truckers believed to be reliable will be available to assist in shipping your purchases.

**LIVESTOCK MORTALITY INSURANCE:** James Bessler (815) 762-2641 Dakota Ag Insurance, Jared Mohnen (605) 682-1368

**LIABILITY:** Janssen Angus assumes no liability for injuries or accidents that happen on the sale premises.

**FOOD AND REFRESHMENTS:** Will be available sale day

Sale book prepared by the Sale Managers,

TOM BURKE, KURT SCHAFF, JEREMY HAAG,

AMERICAN ANGUS HALL OF FAME,

At the WORLD ANGUS HEADQUARTERS,

PO Box 660, Smithville, MO 64089-0660.

Phone: (816) 532-0811. Fax: (816) 532-0851.

E-Mail: [angushall@angushall.com](mailto:angushall@angushall.com) - [www.angushall.com](http://www.angushall.com)



**DVAuction**  
Broadcasting Real-Time Auctions

Visit the *Angus Journal* Web site, [www.angus.org](http://www.angus.org) and view this sale book online.  
References: American Angus Association®, AHIR®, AngusSource®, CAB®, Pathfinder®. EPDs current as of October 1, 2020. Updated EPDs can be viewed online at [www.angus.org](http://www.angus.org).

## COMMENTS FROM THE SALE MANAGERS Janssen Angus - The Performance Brand!



Tom  
Burke

Plan now to be on hand for the Fall 2020 Edition of the Janssen Angus Production Sale. This elite Angus female sale comprised of 35 open heifers along with 15 bred heifers and cows consists of the most powerful female offering ever from the Janssen Family history of 29 auctions. The sale includes the entire crop of ranch raised heifer calves, with none held back. Leading cow families are represented including Madame Pride, Emblynette, Blackcap May, Greystone Janet, Elba, Enchantress and more. A powerful array of sires are represented, both through AI and through the Janssen herd sire battery. The quality is deep with bred in phenotype, performance, maternal and carcass value throughout.

It is a pleasure and privilege to work with Jon and Maradith Janssen and their family in the presentation of this outstanding sale offering. After hosting a spring of successful Angus bull and female sales, you can expect even more in this latest sensational event. This sale will take place at the Janssen Angus Sale Facility located less than 20 miles west of Des Moines, Iowa. We look forward to seeing you sale day. If we can be of assistance in anyway with your selection decision, please don't hesitate to call.



Kurt  
Schaff



Jeremy  
Haag

Tom Burke  
(816) 853-2697

Kurt Schaff  
(816) 520-6447

Jeremy Haag  
(816) 516-1309

# JANSSEN MADAME PRIDE FAMILY



**JANSSEN MADAME PRIDE 4502 - Lot 1**

## 1 JANSSEN MADAME PRIDE 4502

Birth Date: 1-1-2014 Cow +\*17926403 Tattoo: 4502

SAV Pioneer 7301  
#15688392 SAV Blackbird 5297

#+SAV 004 Density 4336  
SAV Madame Pride 8827  
+16145709 SAV Madame Pride 2330

#Sitz Traveler 8180  
SAV Emulous 8145  
#+Boyd New Day 8005  
SAV Blackbird 1082

#SAV 8180 Traveler 004  
SAV May 7238  
#+SAV Final Answer 0035  
SAV Madame Pride 0075

CED	BW	WW	YW	SC	DOC	MILK	CW	MB	RE	SC
+3	+3.0	+73	+130	+1.33	+20	+26	+59	+31	+64	+231

\$M
+49
\$W
+71
\$B
+140

- This productive and proven Madame Pride donor balances a progeny birth ratio of 91 with a progeny weaning ratio of 103 on three natural calves with three daughters in production who post an outstanding collective progeny weaning ratio of 114.
- Her daughter, Janssen Voss Madame Pride 6123, is the \$11,000 second top-selling bred heifer of the 2017 Janssen Female Sale.



**SAV MADAME PRIDE 3918 - \$9,500 maternal sister to Lots 1 and 4.**



**SAV MADAME PRIDE 8827 - Dam of Lots 1 and 4.**

- Her daughter, Janssen Madame Pride 8028, produced the exciting young bull, Janssen Nasdaq 005, who will highlight the 2021 Janssen Production Sale.
- A flush of five sons averaged nearly \$9,000 with a top of \$10,250 in the 2019 Janssen Production Sale.
- This cow is backed by the proven Genex Pathfinder Sires SAV Pioneer 7301, SAV 004 Density 4336 and SAV Final Answer 0035, stemming from the maternal matriarch, SAV Madame Pride 0075, who has generated more than \$5.3 million in progeny sales to date.
- Her maternal brother, Janssen Wyatt Earp 5110, is the ABS Global sire who was the \$55,000 top-selling Lot 1 bull of the 2016 Janssen Sale where their maternal sister was the \$16,500 top-selling open heifer, and another maternal sister who was the \$9,500 top-selling cow of the 2020 Janssen Sale produced the Alta Genetics sire, Janssen Daytona 5105, who was the \$30,000 second top-selling bull of the 2016 Janssen Sale.
- **Bred to calve January 27, 2021, to SAV RAINFALL 6846. Examined Safe.**



**JANSSEN WYATT EARP 5110**  
- \$55,000 maternal brother to Lots 1 and 4.

**JANSSEN DAYTONA 5105 - \$30,000 bull produced from a maternal sister to Lots 1 and 4.**





## JANSSEN MADAME PRIDE FAMILY

- A phenomenal full sister to Janssen Madame Pride 8028 who produced as her first calf the exciting young Janssen Nasdaq 0012 who will highlight the 2021 Janssen Sale.
- Her maternal sister was the \$11,000 second top-selling bred heifer of the 2017 Janssen Female Sale while five maternal brothers averaged nearly \$9,000 with a top of \$10,250 in the 2019 Janssen Production Sale.
- This daughter of the \$750,000 SAV President 6847 is a paternal sister to the all-time world record-selling bull SAV America 8018 from the same family.



**JANSSEN MADAME PRIDE 8028** - This daughter of Lot 1 is a full sister to Lot 1A and a maternal sister to Lot 1B.



**JANSSEN MADAME PRIDE 0054** - Lot 1A

### 1A JANSSEN MADAME PRIDE 0054

Birth Date: 2-1-2020 Cow +*19816107					Tattoo: 0054					
#*Coleman Charlo 0256					#*OCC Paxton 730P					\$M
SAV President 6847					+Bohi Abigale 6014					+61
+*18578964 *SAV Blackcap May 4136					#SAV 8180 Traveler 004					\$W
					+*SAV May 2397					
#SAV Pioneer 7301					#*SAV Final Answer 0035					+88
Janssen Madame Pride 4502					SAV Blackbird 5297					\$B
+*17926403 +SAV Madame Pride 8827					+*SAV 004 Density 4336					
					SAV Madame Pride 2330					+150
CED	BW	WW	YW	SC	DOC	MILK	CW	MB	RE	\$C
+3	+2.0	+79	+142	+36	+31	+33	+62	+60	+64	+256

### 1B JANSSEN MADAME PRIDE 0110

Birth Date: 2-11-2020 Cow +19817194					Tattoo: 0110					
*Connealy Confidence Plus					#*Connealy Confidence 0100					\$M
Woodhill Blueprint					Elbanna of Conanga 1209					+56
*18876777 *Woodhill Evergreen Z291-B233					*Tehama Sierra Cut 2118					\$W
					*Woodhill Evergreen U6-Z291					
#SAV Pioneer 7301					#SAV Final Answer 0035					+69
Janssen Madame Pride 4502					SAV Blackbird 5297					\$B
+*17926403 +SAV Madame Pride 8827					#+SAV 004 Density 4336					+144
					SAV Madame Pride 2330					
CED	BW	WW	YW	SC	DOC	MILK	CW	MB	RE	\$C
I+6	I+1.7	I+67	I+124	I+1.16	I+20	I+26	I+50	I+.49	I+.81	+243

- This outstanding Madame Pride heifer from the featured Lot 1 cow has three maternal sisters in production who post a collective progeny weaning ratio of 114 and they include the \$11,000 second top-selling bred heifer of the 2017 Janssen Female Sale.
- Five maternal brothers averaged nearly \$9,000 with a top of \$10,250 in the 2019 Janssen Production Sale.
- Her sire is the \$50,000 Select Sires bull, Woodhill Blueprint, and the dam is a full sister to the \$21,000 SAV Parade 4902.



**JANSSEN VOSS MADAME PRIDE 6179** - This \$15,000 top-selling bred heifer was produced from a maternal sister to Lot 1.



**JANSSEN MADAME PRIDE 0110** - Lot 1B



## JANSSEN MADAME PRIDE FAMILY



**JANSSEN MADAME PRIDE 0009** - Lot 2

- A beautiful breeding piece from the Madame Pride family backed by the blending of the popular maternal brothers SAV Rainfall 6846 and SAV Renown 3439.
- The dam balances a progeny birth ratio of 99 with a progeny weaning ratio of 108 on her first natural calf, and she is a flush sister to five bulls who averaged nearly \$9,000 with a top of \$10,250 in the 2019 Janssen Production Sale.
- The grandam is the featured Lot 1 donor who has served as a valued second-generation Janssen Madame Pride donor.



**JANSSEN MADAME PRIDE 4502** - Grandam of Lots 2 and 3.

### 2 JANSSEN MADAME PRIDE 0009

Birth Date: 1-3-2020		Cow +*19810556		Tattoo: 0009							
#+*Coleman Charlo 0256		#*OCC Paxton 730P				\$M					
SAV Rainfall 6846		+Bohi Abigale 6014				+75					
+*18578963		*SAV Blackcap May 4136		#SAV 8180 Traveler 004		\$W					
				#+SAV May 2397		+78					
#+*SAV Renown 3439		+Rito 707 of Ideal 3407 7075				\$B					
Janssen Madame Pride 8121		*SAV Blackcap May 4136		#SAV Pioneer 7301		+100					
+*19278271		+*Janssen Madame Pride 4502		#SAV Madame Pride 8827		\$C					
CED	BW	WW	YW	SC	DOC	MILK	CW	MB	RE		
+6	+8	+69	+123	+97	+18	+27	+38	+22	+56	+205	

### 3 JANSSEN MADAME PRIDE 0001

Birth Date: 1-1-2020		Cow 19808486		Tattoo: 0001							
		*Jindra Acclaim		*Jindra 3rd Dimension		\$M					
Jindra Blackout		+Jindra Judy J 1314 3150		+Jindra Blackbird Lassy 1111		+43					
*18996457				#GT Shear Force		\$W					
				Hoff Judy SC 669 1314		+59					
+*SAV Sensation 5615		#+*SAV Registry 2831		*SAV Blackcap May 4136		\$B					
Janssen MadamePride 7059		*SAV Pioneer 7301		#SAV Pioneer 7301		+168					
+18900345		+*Janssen Madame Pride 4502		#SAV Madame Pride 8827		\$C					
CED	BW	WW	YW	SC	DOC	MILK	CW	MB	RE		
+5	+1.5	+60	+120	+52	+27	+29	+66	+45	+80	+261	



**JANSSEN MADAME PRIDE 0001** - Lot 3

- This powerful and intriguing Madame Pride heifer is by the Alta Genetics sire, Jindra Blackout, who is the \$135,000 record-selling bull from the 2018 Jindra Sale.
- This heifer records an individual weaning ratio of 103 from a dam who has earned a progeny weaning ratio of 103 on her first two calves.
- The grandam is the featured Lot 1 donor from the time-tested family descending from SAV Madame Pride 0075, the second highest income-producing cow in the history of the Schaff Angus Valley program.



**SAV MADAME PRIDE 8827** - Third dam of Lots 2 and 3.



# JANSSEN MADAME PRIDE FAMILY



**JANSSEN MADAME PRIDE 5102 - Lot 4**

**4 JANSSEN MADAME PRIDE 5102** [OSF]

Birth Date: 12-3-2014 Cow +\*18231629 Tattoo: 5102

											\$M
											+29
											\$W
											+41
											\$B
											+142
CED	BW	WW	YW	SC	DOC	MILK	CW	MB	RE	\$C	
-2	+6.3	+71	+126	+71	+7	+17	+53	+49	+49	+213	

- This powerful and proven Madame Pride donor balances a progeny birth ratio of 97 with a progeny weaning ratio of 104 on three natural calves and a progeny yearling ratio of 107 on one head along with progeny IMF and ribeye ratios of 104 and 103 respectively on ten head.
- This maternal sister to the featured Lot 1 donor is also a maternal sister to the ABS Global sire, Janssen Wyatt Earp 5110, who is the \$50,000 top-selling bull of the 2016 Janssen Sale where their maternal sister was the \$16,500 top-selling open heifer, and another maternal sister is the \$9,500 top-selling cow of the 2020 Janssen Production Sale.
- **Bred to calve April 23, 2021, to SAV AMERICA 8018. Examined Safe.**



**SAV MADAME PRIDE 0075 -**  
Third dam of Lots 1 and 4 and  
grandam of Lot 6.



**SAV MADAME PRIDE 1093**  
- This full sister to SAV  
Madame Pride 0075 is the  
Pathfinder Grandam of Lot 5.



**JANSSEN MADAME PRIDE 7039 - \$12,500**  
daughter of Lot 4.

**4A JANSSEN MADAME PRIDE 9254**

Birth Date: 2-21-2019 Cow +19521575 Tattoo: 9254

											\$M
											+59
											\$W
											+60
											\$B
											+129
CED	BW	WW	YW	SC	DOC	MILK	CW	MB	RE	\$C	
I+6	I+3.2	I+66	I+121	I+83	I+15	I+23	I+39	I+57	I+54	+226	

- This beautiful, bred heifer from the embryo program is a maternal sister to the \$12,500 second top-selling heifer calf of the 2017 Janssen Female Sale, from a top-indexing donor dam.
- Her sire is the \$460,000 Select Sires bull, SAV Rainfall 6846, and her dam is backed by the Pathfinder Sires SAV Harvester 0338 and SAV 004 Density 4336.
- **Bred to calve March 13, 2021, to CRAWFORD GUARANTEE. Examined Safe.**



**JANSSEN MADAME PRIDE 9254 - Lot 4A**



# JANSSEN MADAME PRIDE FAMILY



**JANSSEN MADAME PRIDE 0010 - Lot 5**

## 5 JANSSEN MADAME PRIDE 0010 [DDF]

Birth Date: 12-18-2019 Cow 19810652					Tattoo: 0010					
#+*SAV Resource 1441					+Rito 707 of Ideal 3407 7075					\$M
SAV Territory 7225					*SAV Blackcap May 4136					+45
*18913034					#+SAV 004 Density 4336					\$W
*SAV Emblynette 3293					SAV Emblynette 7411					+61
#*SAV Harvester 0338					*#SAV Heritage 6295					\$B
Janssen Madame Pride 4333					*SAV Emblynette 7749					N/A
18070683					#SAV Madame Pride 1093					
					SAV Madame Pride 8264					
CED	BW	WW	YW	SC	DOC	MILK	CW	MB	RE	\$C
+3	+3.2	+74	+133	N/A	N/A	+23	N/A	N/A	N/A	N/A

- This powerful daughter of the \$230,000 ST Genetics sire, SAV Territory 7225, combines an individual birth ratio of 96 with an individual weaning ratio of 105, stemming from the proven Pathfinder Dam, SAV Madame Pride 1093.
- The dam is a maternal sister to SAV Madame Pride 4466 who produced the dams of the famous Pathfinder Dams, SAV Madame Pride 1134 and SAV Madame Pride 3145.

## 6 JANSSEN MADAME PRIDE 0035

Birth Date: 1-11-2020 Cow +*19803642					Tattoo: 0035					
#*Coleman Charlo 0256					#*OCC Paxton 730P					\$M
SAV President 6847					+Bohi Abigale 6014					+39
+*18578964					*SAV 8180 Traveler 004					\$W
*SAV Blackcap May 4136					#+SAV May 2397					+50
#*SAV International 2020					#*SAV Harvester 0338					\$B
SAV Madame Pride 6617					#+SAV Emblynette 5483					+138
+*18542133					*SAF 598 Bando 5175					
SAV Madame Pride 0075					SAV Madame Pride 8264					
CED	BW	WW	YW	SC	DOC	MILK	CW	MB	RE	\$C
+2	+4.2	+72	+133	+48	+17	+18	+61	+16	+61	+218

- A granddaughter of the maternal matriarch, SAV Madame Pride 0075, who has generated more than \$5.3 million in progeny sales to date, sired by the \$750,000 SAV President 6847, whose mating together produced the \$1.51 million all-time world record-selling bull, SAV America 8018.
- Two full sisters to the dam of this heifer serve as donors in the SAV program, sired by the \$400,000 Pathfinder Sire, SAV International 2020.



**JANSSEN MADAME PRIDE 0035 - Lot 6**



**SAV MADAME PRIDE 9803 -**  
Grandam of Lots 7 and 7A.



**JANSSEN MADAME PRIDE 7052**  
- \$15,000 maternal sister to the  
dam of Lots 7 and 7A.

## 7 JANSSEN MADAME PRIDE 0052

Birth Date: 2-2-2020 Cow +*19810651					Tattoo: 0052					
+*Sinclair Emulation XXP					#*N Bar Emulation EXT					\$M
SAV Elation 7899					#N Bar Primrose Y3051					+52
+*18911198					+Rito 707 of Ideal 3407 7075					\$W
+*SAV Blackcap May 1782					#+SAV May 2397					+74
#*SAV Harvester 0338					+*SAV Heritage 6295					\$B
SAV Madame Pride 4530					+*SAV Emblynette 7749					+120
+*17903064					+*SAV Bismarck 5682					
+*SAV Madame Pride 9803					*SAV Madame Pride 5290					
CED	BW	WW	YW	SC	DOC	MILK	CW	MB	RE	\$C
+2	+3.4	+77	+126	+80	+21	+24	+61	+19	+51	+208

- Blending the Madame Pride and Blackcap May families, this heifer is sired by the \$800,000 one-time world record-selling bull, SAV Elation 7899.
- The donor dam is a maternal sister to the eighth generation SAV embryo donor, SAV Madame Pride 2304, stemming from the noted SAV Madame Pride 9803, SAV Madame Pride 5290 and SAV Madame Pride 0075.

## 7A JANSSEN MADAME PRIDE 0048

Birth Date: 2-1-2020 Cow +*19810649					Tattoo: 0048					
+*Sinclair Emulation XXP					#*N Bar Emulation EXT					\$M
SAV Elation 7899					#N Bar Primrose Y3051					+30
+*18911198 +*SAV Blackcap May 1782					#Rito 707 of Ideal 3407 7075					\$W
					#+SAV May 2397					+57
#*SAV Harvester 0338					+*SAV Heritage 6295					\$B
SAV Madame Pride 4530					+*SAV Emblynette 7749					+139
+*17903064 +*SAV Madame Pride 9803					#+SAV Bismarck 5682					
					*SAV Madame Pride 5290					
CED	BW	WW	YW	SC	DOC	MILK	CW	MB	RE	\$C
-3	+6.2	+89	+145	-.08	+11	+11	+69	+28	+45	+210

- The sire of this heifer is the \$800,000 one-time world record-selling bull through the 2018 SAV Sale who transmits added performance along with his maternal heritage.
- The donor dam is a maternal sister to a long line of noted individuals including the eighth generation SAV donor, SAV Madame Pride 2304, stemming from the famous females SAV Madame Pride 9803, SAV Madame Pride 5290 and SAV Madame Pride 0075.



**JANSSEN MADAME PRIDE 0048 - Lot 7A**



# JANSSEN GREYSTONE JANET FAMILY



**JANSSEN GREYSTONE JANET 0007 - Lot 8**

**JANSSEN GREYSTONE JANET 5006 - Dam of Lot 8.**

## 8 JANSSEN GREYSTONE JANET 0007

Birth Date: 1-3-2020 Cow \*19810573 Tattoo: 0007

#*Coleman Charlo 0256					#OCC Paxton 730P					\$M
SAV Rainfall 6846					+Bohi Abigale 6014					+76
+*18578963					#SAV 8180 Traveler 004					\$W
*SAV Blackcap May 4136					#+SAV May 2397					+80
#*SAV International 2020					#*SAV Harvester 0338					\$B
Janssen Greystone Janet 5006					#+*SAV Emblynette 5483					+119
*18242043					#+SAF 598 Bando 5175					\$C
+SAV Greystone Jannet 4351					SAV Jannet 7059					+230
CED	BW	WW	YW	SC	DOC	MILK	CW	MB	RE	\$C
+5	+2.4	+64	+104	+39	+12	+36	+38	+71	+55	

- This valuable breeding piece balances an individual birth ratio of 96 with an individual weaning ratio of 108 by the \$460,000 SAV Rainfall 6846 who is the most popular bull in the Select Sires AI Stud.
- The productive dam balances a progeny birth ratio of 97 with a progeny weaning ratio of 111 on three natural calves and a progeny IMF ratio of 108 on five head, and she serves as a valued Janssen donor.
- A maternal brother, Janssen Washington 8099, is the heaviest-ever 205-day weight bull at Janssen Angus at 1,048 pounds and the third heaviest 365-day weight bull of the 2020 Janssen Production Sale where he was selected by Dr. Glen Hanson as the \$20,000 top-selling bull.
- A maternal sister was selected by Kiesewetter Angus from the 2018 Janssen Female Sale.



**JANSSEN WASHINGTON 8099**  
- \$20,000 maternal brother to Lot 8.



**JANSSEN VOSS RENOVATE 6168**  
- \$11,750 maternal brother to the dam of Lot 8.



## PREVIEW HIGHLIGHTS OF THE 2021 JANSSEN ANGUS PRODUCTION SALE

### B1 JANSSEN NASDAQ 0012

Birth Date: 1-4-2020 Bull \*19810608 Tattoo: 0012

					#*Basin Payweight 1682					#*Basin Payweight 006S	\$M
					Deer Valley Growth Fund					21AR O Lass 7017	+71
					+*18827828					#*Plattmeyer Weigh Up K360	\$W
					+*Deer Valley Rita 36113					+Deer Valley Rita 9457	+93
					+*SAV President 6847					#*Coleman Charlo 0256	\$B
					Janssen Madame Pride 8028					*SAV Blackcap May 4136	+134
					*19326989					#SAV Pioneer 7301	\$C
					+*Janssen Madame Pride 4502					+SAV Madame Pride 8827	
CED	BW	WW	YW	SC	DOC	MILK	CW	MB	RE	\$C	
+5	+2.5	+95	+157	+33	+26	+22	+76	+15	+63	+245	

- SELLING SATURDAY, FEBRUARY 20, 2021.**
- From the Madame Pride family, sired by Deer Valley Growth Fund.
- Birth ratio 95, weaning ratio 142. Dam BR 1@95, Dam WR 1@142.

### B2 JANSSEN DOW JONES 0005

Birth Date: 1-3-2020 Bull \*19810625 Tattoo: 0005

					#*Basin Payweight 1682					#*Basin Payweight 006S	\$M
					Deer Valley Growth Fund					21AR O Lass 7017	+89
					+*18827828 +*Deer Valley Rita 36113					#*Plattmeyer Weigh Up K360	\$W
										+Deer Valley Rita 9457	
					+*SAV Seedstock 4838					#*SAV Registry 2831	+94
					Janssen Bessie Heiress 6028					*SAV Blackcap May 4136	\$B
					*18630673 #SAV Bessie Heiress 3946					#SAV Prosperity 9131	+162
										SAV Bessie Heiress 0049	
CED	BW	WW	YW	SC	DOC	MILK	CW	MB	RE	\$C	
+13	+5	+88	+153	+67	+30	+25	+81	+35	+97	+299	

- SELLING SATURDAY, FEBRUARY 20, 2021.**
- From the Bessie Heiress family, sired by Deer Valley Growth Fund.
- Birth ratio 85, weaning ratio 125. Dam BR 2@99, Dam WR 2@127.



# JANSSEN EMBLYNETTE FAMILY



**JANSSEN EMBLYNETTE 6006** - Lot 9

**9 JANSSEN EMBLYNETTE 6006**

Birth Date: 1-4-2016 Cow +\*18633081 Tattoo: 6006

					#RR Rito 707					\$M
+Rito 707 of Ideal 3407 7075					Ideal 3407 of 1418 076					+48
SAV Renown 3439					#SAV 8180 Traveler 004					\$W
#+*17633839 *SAV Blackcap May 4136					#+SAV May 2397					+71
					#FV 20K King 308M					\$B
+*SAV Royalty 8471					SAV Rosetta 0523					+73
SAV Emblynette 0268					#SAV 8180 Traveler 004					\$C
16637967 #+SAV Emblynette 6019					#SAV Emblynette 0429					+143
CED	BW	WW	YW	SC	DOC	MILK	CW	MB	RE	\$C
+7	+1.6	+61	+106	+88	+21	+33	+38	-29	+66	

- This tremendous producer balances a progeny birth ratio of 87 with a progeny weaning ratio of 113 on three natural calves, offering unlimited future potential.
- This Janssen donor by the \$175,000 Genex Pathfinder Sire, SAV Renown 3439, was produced from SAV Emblynette 0268 who was selected by Kiesewetter Angus of Illinois as the \$9,000 top-selling cow of the 2017 Janssen Female Sale where full sisters to this cow sold to Mayben Larsen and to Schlager Angus.
- **Bred to calve February 26, 2021, to SAV BLOODLINE 9578. Exposed to LT ADVANTAGE 8382. Examined Safe.**



**JANSSEN EMBLYNETTE 6006** - Lot 9 pictured with her first calf.



**JANSSEN VOSS EMBLYNETTE 6019** - Full sister to Lot 9.

**9A JANSSEN EMBLYNETTE 0087**

Birth Date: 3-31-2020 Cow \*19803640 Tattoo: 0087

					#*Sitz Investment 660Z					\$M
*SVA The Donald 4030					#SVA Eileen 9051					+44
Topp Republic 8062					#*Mohnen Wolf Creek 1871					\$W
+*19223930 +TA Forever 3738					TC Forever 6123					+71
					#Rito 707 of Ideal 3407 7075					\$B
#+*SAV Renown 3439					*SAV Blackcap May 4136					+114
Janssen Emblynette 6006					+*SAV Royalty 8471					
+*18633081 SAV Emblynette 0268					#+SAV Emblynette 6019					
CED	BW	WW	YW	SC	DOC	MILK	CW	MB	RE	\$C
+2	+3.1	+75	+140	+.25	+26	+29	+63	-.18	+.96	+192

- This Emblynette heifer combines an individual birth ratio of 90 with an individual weaning ratio of 124, produced as a natural calf from a second generation Janssen Emblynette donor with a progeny birth ratio of 87 combined with a progeny weaning ratio of 113 on three calves, stemming from SAV Emblynette 6019 who represents three consecutive generations of Pathfinder Dams.
- The sire was selected as the co-second-top-selling bull of the 2019 Topp Sale.



**JANSSEN EMBLYNETTE 0087** - Lot 9A



## JANSSEN EMBLYNETTE FAMILY

- An exceptional brood cow prospect with an impressive individual weaning ratio of 113 sired by the \$100,000 Genex sire, SAV Expertise 7028.
- The dam of this heifer is a full sister to the Janssen Emblynette donor featured as Lot 9 and the females selected by Mayben Larsen of Utah and Schlager Angus of Missouri from the 2017 Janssen Female Sale where their grandam, SAV Emblynette 0268, was the \$9,000 top-selling cow to Kieseewetter Angus.
- The third dam is a third generation Pathfinder Dam.



**SAV EMBLYNETTE 0268** - \$9,000 dam of Lot 9 and grandam of Lot 9A and 10.



**JANSSEN EMBLYNETTE 0018** - Lot 10

### 10 JANSSEN EMBLYNETTE 0018

Birth Date: 1-4-2020 Cow \*19803614 Tattoo: 0018

		+*Sinclair Emulation XPP		#*N Bar Emulation EXT								\$M
SAV Expertise 7028				#N Bar Primrose Y3051								+44
*18911200		+*SAV Blackcap May 1416		+Rito 707 of Ideal 3407 7075								\$W
				*SAV Blackcap May 4136								+48
				+Rito 707 of Ideal 3407 7075								\$B
Janssen Emblynette 7097				*SAV Blackcap May 4136								+114
+*18967731		SAV Emblynette 0268		+*SAV Royalty 8471								
				#+SAV Emblynette 6019								
CED	BW	WW	YW	SC	DOC	MILK	CW	MB	RE			\$C
-5	+3.8	+70	+131	+98	+31	+15	+55	+0.03	+31			+192

### 11 JANSSEN EMBLYNETTE 0006

Birth Date: 1-2-2020 Cow 19810640 Tattoo: 0006

		#+*SAV Resource 1441		+Rito 707 of Ideal 3407 7075								\$M
SAV Territory 7225				*SAV Blackcap May 4136								+73
*18913034		*SAV Emblynette 3293		#+SAV 004 Density 4336								\$W
				SAV Emblynette 7411								+85
				#SAV Pioneer 7301								\$B
Janssen Emblynette 7123				*SAV Blackcap May 4136								+127
+18974296		SAV Emblynette 9020		#Waimata E230								
				#+SAV Emblynette 6660								
CED	BW	WW	YW	SC	DOC	MILK	CW	MB	RE			\$C
+9	+1.9	+80	+137	+1.50	+29	+30	+53	+0.29	+90			+238

- This massive Emblynette heifer has an individual birth ratio of 96 combined with an individual weaning ratio of 113 by the \$230,000 ST Genetics sire, SAV Territory 7225, from a dam by the \$725,000 one-time world record-selling bull, SAV Pedigree 4834.
- The dam is a maternal sister to the \$12,500 fourth top-selling bull of the 2017 Janssen Production Sale and to the \$10,000 co-third top-selling bull of the 2020 Janssen Production Sale, stemming from the Janssen foundation donor, SAV Emblynette 9020, and the third dam is a rare seventh consecutive generation Pathfinder Dam.



**SAV EMBLYNETTE 9020** - Grandam of Lot 11.



**JANSSEN EMBLYNETTE 0006** - Lot 11

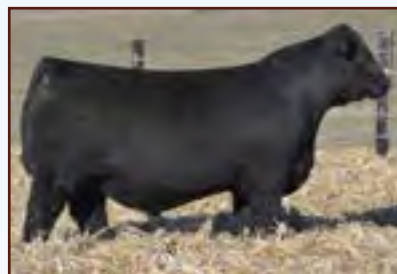


## JANSSEN EMBLYNETTE FAMILY



**JANSSEN EMBLYNETTE 0019 - Lot 12**

- This impressive Emblynette heifer is backed by the successful blending of the popular maternal brothers to SAV Rainfall 6846 and SAV Resource 1441 from a dam who balances a progeny birth ratio of 96 with a progeny weaning ratio of 101 on four calves and a progeny IMF ratio of 106 on three head.
- The grandam is a maternal sister to famous individuals including SAV Emblynette 2369, SAV Emblynette 0491 and SAV Emblynette 6506, stemming from the high-income producing cow, SAV Emblynette 7566.
- Janssen Cyclone 9017, a three-quarter brother from the same family, was the \$10,000 co-third top-selling bull of the 2020 Janssen Production Sale to Wagonhammer Angus Ranch.



**JANSSEN CYCLONE 9017 - \$10,000**  
three-quarter brother to Lot 12.

12 JANSSEN EMBLYNETTE 0019

Birth Date: 1-4-2020					Cow 19810582					Tattoo: 0019					
#*Coleman Charlo 0256					#*OCC Paxton 730P										\$M
SAV Rainfall 6846					+Bohi Abigale 6014										+72
+*18578963					*SAV Blackcap May 4136										\$W
#*SAV Resource 1441					+Rito 707 of Ideal 3407 7075										+64
Janssen Emblynette 4531					*SAV Blackcap May 4136										\$B
+17926416					#+SAV Providence 6922										+85
*SAV Emblynette 0179					+*SAV Emblynette 7566										
CED	BW	WW	YW	SC	DOC	MILK	CW	MB	RE				\$C		
+13	-1	+49	+97	+29	+22	+36	+21	+29	+54				+182		

**13 JANSSEN EMBLYNETTE 0025**

Birth Date: 1-5-2020   Cow *19803617   Tattoo: 0025										
#+*Coleman Charlo 0256					#*OCC Paxton 730P					\$M
SAV President 6847					+Bohi Abigale 6014					+57
+*18578964   *SAV Blackcap May 4136					#SAV 8180 Traveler 004					\$W
					#+SAV May 2397					+72
#+*SAV Resource 1441					*Rito 707 of Ideal 3407 7075					\$B
Janssen Emblynette 7042					*SAV Blackcap May 4136					+96
18950274   #SAV Emblynette 0890					#SAV Net Worth 4200					
					+SAV Emblynette 0783					
CED	BW	WW	YW	SC	DOC	MILK	CW	MB	RE	\$C
+4	+3.1	+70	+124	+65	+8	+29	+47	-29	+88	+182



**JANSSEN EMBLYNETTE 0025 - Lot 13**

- A maternal sister to Janssen Free Democracy 9001, the \$17,000 second top-selling bull of the 2020 Janssen Production Sale to Comstock Farms of Missouri.
- This daughter of the \$750,000 SAV President 6847 balances an individual birth ratio of 94 with an individual weaning ratio of 107 from a dam who combines a progeny birth ratio of 93 with a progeny weaning ratio of 114 on two calves and a progeny IMF ratio of 144 on one head, stemming from a Pathfinder grandam.



**JANSSEN FREE DEMOCRACY 9001 -**  
\$17,000 maternal brother to Lot 13.



# JANSSEN EMBLYNETTE FAMILY



**JANSSEN EMBLYNETTE 0024** - Lot 14

## 14 JANSSEN EMBLYNETTE 0024

Birth Date: 1-5-2020					Cow *19810644					Tattoo: 0024					
#*SAV Resource 1441					+Rito 707 of Ideal 3407 7075										\$M
SAV Territory 7225					*SAV Blackcap May 4136										+64
*18913034					#+SAV 004 Density 4336										\$W
*SAV Emblynette 3293					SAV Emblynette 7411										+81
Connealy Earl Marshall					#+*Connealy Earnan 076E										\$B
Janssen Emblynette 6037					Babby of Conanga 1278										+152
*18602201					#SAV Emblynette 3930										
CED	BW	WW	YW	SC	DOC	MILK	CW	MB	RE				\$C		
+0	+4.7	+94	+165	+1.29	+27	+23	+82	+32	+72				+261		

- This fantastic Emblynette heifer balances an individual birth ratio of 86 with an individual weaning ratio of 119, sired by the popular ST Genetics sire, SAV Territory 7225, who is the \$230,000 second top-selling bull of the 2018 SAV Sale.
- The dam of this heifer balances a progeny birth ratio of 91 with a progeny weaning ratio of 110 on three calves and the grandam is a Pathfinder Dam.
- A maternal brother is the \$10,000 co-third top-selling bull of the 2020 Janssen Production Sale to the Alta Genetics AI Stud.

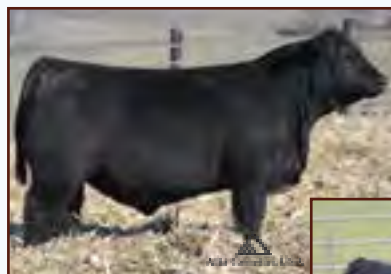
## 15 JANSSEN EMBLYNETTE 0062

Birth Date: 2-25-2020 Cow *19803627					Tattoo: 0062					
#+*SAV Resource 1441					+Rito 707 of Ideal 3407 7075					\$M
Payne Fundamental 7137					*SAV Blackcap May 4136					+39
*+19155123 #AC Duke Girl 57					CAR Tracker 305					\$W
					#AC Duke Girl 330					
+*SAV Hesston 2217					#*SAV Harvester 0338					+44
Janssen Emblynette 4525					+SAV Emblynette 3301					\$B
#17926409 +SAV Emblynette 0775					#*SAV Final Answer 0035					+107
					+EA Emblynette 104					
CED	BW	WW	YW	SC	DOC	MILK	CW	MB	RE	\$C
+8	+3	+36	+86	+82	+18	+35	+26	+43	+39	+178

- A maternal sister to Janssen Rainmaker, the \$20,000 top-selling bull of the 2019 Janssen Production Sale to the Alta Genetics AI Stud.
- This heifer from the first calf crop by the Janssen herd sire, Payne Fundamental 7137, was produced from a proven Pathfinder Dam who balances a progeny birth ratio of 91 with a progeny weaning ratio of 102 on five calves along with progeny IMF and ribeye ratios of 105 and 103 respectively on three head.



**JANSSEN EMBLYNETTE 6037** - Dam of Lot 14.



**JANSSEN HAYES 9046** - \$10,000 maternal brother to Lot 14.



**JANSSEN RAINMAKER** - \$20,000 maternal brother to Lot 15.



**JANSSEN EMBLYNETTE 4525** - Pathfinder Dam of Lot 15.



## JANSSEN EMBLYNETTE FAMILY



**JANSSEN EMBLYNETTE 0081 - Lot 17**

**18 JANSSEN EMBLYNETTE 3945** [CAF]

Birth Date: 3-20-2013 Cow 17926406										Tattoo: 3945	
#+SAV 004 Predominant 4438					#SAV 8180 Traveler 004					\$M	
SAV Providence 6922					SAV Emblynette 1182					+51	
#+15707145 SAV May 7238					#+Leachman Right Time					\$W	
					#SAR Prospector May 9124					+58	
#*SAV Final Answer 0035					#Sitz Traveler 8180					\$B	
SAV Emblynette 0781					SAV Emulous 8145					+124	
+15895704 +EA Emblynette 104					#+SAF 598 Bando 5175						
					SAV Sky Diamond 2582						
CED	BW	WW	YW	SC	DOC	MILK	CW	MB	RE	\$C	
+1	+5.3	+61	+106	+1.36	+6	+31	+43	+26	+34	+212	

- This proven producer records a progeny weaning ratio of 102 on four calves with two daughters in production who sell as Lot 19 and 20 and record a collective progeny weaning ratio of 109.
- This cow is backed by the Genex Pathfinder Sires, SAV Providence 6922 and SAV Final Answer 0035.
- **Bred to calve February 21, 2021, to SAV RAINFALL 6846. Exposed to LT ADVANTAGE 8382. Examined Safe.**

19 JANSSEN EMBLYNETTE 5031 [OSF]

**Birth Date:** 1-26-2015    **Cow** 18242047    **Tattoo:** 5031  
**#+\*GAR Grid Maker**    **#GDAR Traveler 044**  
**SAV Bismarck 5682**    **GAR Precision 2536**  
**#+15109865**    **SAV Abigale 0451**    **Schoenes Fix It 826**  
                                  **SAV Abigale 6062**  
  
**#+SAV Providence 6922**    **#+SAV 004 Predominant 4438**  
**Janssen Emblynette 3945**    **SAV May 7238**  
**17926406**    **#+SAV Final Answer 0035**  
                          **+EA Emblynette 104**

- This daughter of Lot 18 blends the Genex Pathfinder Sires, SAV Bismarck 5682, SAV Providence 6922 and SAV Final Answer 0035.
- This cow has a progeny weaning ratio of 99 on two calves while her dam records a progeny weaning ratio of 102 on four calves.
- **Bred to calve March 11, 2021, to SAV RAINFALL 6847. Exposed to LT ADVANTAGE 8382. Examined Safe.**



Birth Date: 3-16-2020 Cow 19803635 Tattoo: 0075  
 \*SVA The Donald 4030  
 Topp Republic 8062  
 +\*19223930 +TA Forever 3738  
 #+SAV Bismarck 5682  
 Janssen Emblynette 5031  
 18242047 Janssen Emblynette 3945

#\*Sitz Investment 660Z  
 #SVA Eileen 9051  
 #+Mohnen Wolf Creek 1871  
 TC Forever 6123  
 #+\*GAR Grid Maker  
 SAV Abigale 0451  
 #+SAV Providence 6922  
 +SAV Emblynette 0781

CED	BW	WW	YW	SC	DOC	MILK	CW	MB	RE	\$C
+9	+2.0	+73	+129	+1.23	+20	+26	+51	+32	+57	+236

- This Emblynette heifer has a individual birth ratio of 94 combined with an individual weaning ratio of 104 from the first calf crop by the Janssen herd sire, Topp Republic 8062.
- The grandam sells as Lot 18.



# JANSSEN EMBLYNETTE FAMILY



**SAV EMBLYNETTE 1182** -  
Grandam of Lot 22 and third  
dam of Lot 22.



**SAV EMBLYNETTE 4427** -  
Dam of Lot 22 and grandam  
of Lot 21.



**JANSEN EMBLYNETTE 0089** - Lot 21

## 20 JANSEN EMBLYNETTE 6025

Birth Date: 1-27-2016 Cow 18633066 Tattoo: 6025

Birth Date: 1-27-2018    COW 18633880    Rat#6: 6923										
+Rito 707 of Ideal 3407 7075					<b>\$M</b>					
SAV Renown 3439	#RR Rito 707				<b>+47</b>					
#+*17633839	Ideal 3407 of 1418 076									
*SAV Blackcap May 4136					<b>\$W</b>					
#SAV 8180 Traveler 004					<b>+77</b>					
#+SAV May 2397										
#+SAV 004 Predominant 4438					<b>\$B</b>					
SAV May 7238					<b>+132</b>					
Janssen Emblynette 3945	#*SAV Final Answer 0035									
17926406	+EA Emblynette 104									
+SAV Emblynette 0781										
<b>CED</b>	<b>BW</b>	<b>WW</b>	<b>YW</b>	<b>SC</b>	<b>DOC</b>	<b>MILK</b>	<b>CW</b>	<b>MB</b>	<b>RE</b>	<b>\$C</b>
<b>-4</b>	<b>+4.1</b>	<b>+76</b>	<b>+133</b>	<b>+77</b>	<b>+19</b>	<b>+32</b>	<b>+62</b>	<b>+15</b>	<b>+66</b>	<b>+218</b>

- This high indexing daughter of the Genex Pathfinder Sire, SAV Renown 3439, records a progeny weaning ratio of 116 on three calves.
- A maternal sister sells as Lot 19 and their dam sells as Lot 18.
- **Bred to calve February 24, 2021, to SAV EMBLEM 8074. Exposed to LT ADVANTAGE 8382. Examined Safe.**

## 20A JANSEN EMBLYNETTE 0074

Birth Date: 3-12-2020 Cow 19803634 Tattoo: 0074

					*SVA The Donald 4030					#*Sitz Investment 660Z					\$M
Topp Republic 8062										#SVA Eileen 9051					+63
+*19223930					+TA Forever 3738					#+*Mohnen Wolf Creek 1871					\$W
										TC Forever 6123					
					#+*SAV Renown 3439					*Rito 707 of Ideal 3407 7075					+79
Janssen Emblynette 6025										*SAV Blackcap May 4136					\$B
18633066					Janssen Emblynette 3945					#+SAV Providence 6922					+141
										+SAV Emblynette 0781					
CED	BW	WW	YW	SC	DOC	MILK	CW	MB	RE	\$C					
+2	+3.0	+83	+148	+83	+25	+28	+63	+31	+60	+246					

- This high performing heifer has an individual weaning ratio of 116 from the first calf by Topp Republic 8062 from a top-indexing dam with a progeny weaning ratio of 116 on three calves.
- The dam is backed by multiple generations of Genex Pathfinder Sires from the time-tested Emblynette family.



**JANSEN EMBLYNETTE 0074** - Lot 20A

## 21 JANSEN EMBLYNETTE 0089

Birth Date: 4-11-2020 Cow \*19803641 Tattoo: 0089

Payne Fundamental 7137		#*SAV Resource 1441		+Rito 707 of Ideal 3407 7075		\$M				
+*19155123		#AC Duke Girl 57		*SAV Blackcap May 4136		+37				
				CAR Tracker 305		\$W				
				#AC Duke Girl 330						
				*+*SAV Registry 2831		+32				
Janssen Emblynette 6189		+*SAV Seedstock 4838		*SAV Blackcap May 4136		\$B				
+18630702		+SAV Emblynette 4427		#SAV 8180 Traveler 004		+116				
				SAV Emblynette 1182						
CED	BW	WW	YW	SC	DOC	MILK	CW	MB	RE	\$C
-2	+3.2	+51	+104	+47	+18	+18	+43	+09	+50	+188

- This April heifer from the Emblynette family is a member of the first calf crop by the Janssen herd sire, Payne Fundamental 7137.
- The dam was produced in the embryo program stemming from the Janssen foundation donor, SAV Emblynette 4427, who is a full sister to Accelerated Genetics Pathfinder Sire, SAV 004 Predominant 4438.

## 22 JANSEN EMBLYNETTE 9102

Birth Date: 9-12-2019 Cow +19817197 Tattoo: 9102

*Connealy Confidence Plus					#*Connealy Confidence 0100					\$M
Woodhill Blueprint					Elbanna of Conanga 1209					+48
*18876777					*Tehama Sierra Cut Z118					\$W
*Woodhill Evergreen Z291-B233					+*Woodhill Evergreen U6-Z291					+60
#SAV 8180 Traveler 004					#Sitz Traveler 8180					\$B
SAV Emblynette 4427					+Boyd Forever Lady 8003					+116
+14811949					#SAF 598 Bando 5175					
SAV Emblynette 1182					#SAV Emblynette 7319					
CED	BW	WW	YW	SC	DOC	MILK	CW	MB	RE	\$C
+1.5	+1.3	+54	+98	+86	+17	+29	+32	+51	+38	+199

- This fall heifer from the embryo program is by the \$50,000 Select Sires bull, Woodhill Blueprint, from the Janssen foundation donor, SAV Emblynette 4427, who records a progeny weaning ratio of 104 on eight natural calves and a progeny yearling ratio of 102 on six head along with a progeny IMF ratio of 106 on 15 head.
- Four maternal sisters post a collective progeny weaning ratio of 103.
- The dam is a full sister to the Accelerated Genetics Pathfinder Sire, SAV 004 Predominant 4438.



**JANSEN EMBLYNETTE 9102** - Lot 22



# JANSSEN BLACKCAP MAY FAMILY



**JANSSEN BLACKCAP MAY 0027** - Lot 24

**SAV BLACKCAP MAY 6517** - Dam of Lot 23  
and grandam of Lots 24, 25 and 26.



## 23 JANSSEN BLACKCAP MAY 7103

Birth Date: 12-15-2016 Cow +18974188 Tattoo: 7103

SAV Renown 3439	+Rito 707 of Ideal 3407 7075	#RR Rito 707		\$M
#*17633839	*SAV Blackcap May 4136	Ideal 3407 of 1418 076	+44	
		#SAV 8180 Traveler 004	\$W	
		#*SAV May 2397	+63	
		#Sitz Traveler 8180	\$B	
SAV Blackcap May 6517		+Boyd Forever Lady 8003	+99	
+*15465561	#*SAV May 2397	#*SAF 598 Bando 5175	\$C	
		SAV May 7238	+172	

CED	BW	WW	YW	SC	DOC	MILK	CW	MB	RE	\$C
-3	+4.2	+71	+124	+74	+27	+24	+47	+02	+45	+172

- This featured young cow is linebred through the high income producing full sisters, SAV Blackcap May 6517 and SAV Blackcap May 4136, by the \$175,000 Genex Pathfinder Sire, SAV Renown 5439.
- Maternal siblings include the \$30,000 top-selling Lot 1 bull of the 2017 Janssen Production Sale, as well as the \$110,000 top-selling leadoff cow of the 2017 SAV Sale whose progeny include the \$85,000 SAV Purebred 4896.
- Bred to calve March 29, 2021, to LT ADVANTAGE 8382. Examined Safe.**



**JANSSEN BLACKCAP MAY 0067** - Lot 25

## 24 JANSSEN BLACKCAP MAY 0027

Birth Date: 1-3-2020 Cow 19810561 Tattoo: 0027

SAV Rainfall 6846	#*Coleman Charlo 0256	#*OCC Paxton 730P		\$M
+*18578963	*SAV Blackcap May 4136	+Bohi Abigale 6014	+78	
		#SAV 8180 Traveler 004	\$W	
		#*SAV May 2397	+83	
		#*SAV Registry 2831	\$B	
Janssen Blackcap May 7801	+*SAV Sensation 5615	*SAV Blackcap May 4136	+97	
+19199608	+*SAV Blackcap May 6517	#SAV 8180 Traveler 004	\$C	
		#*SAV May 2397	+204	

CED	BW	WW	YW	SC	DOC	MILK	CW	MB	RE	\$C
+9	+1.1	+66	+119	-.32	+23	+36	+31	+49	+40	+204

- This beautiful heifer balances an individual birth ratio of 94 with an individual weaning ratio of 105 by the \$460,000 Select Sires bull, SAV Rainfall 6846, from a dam by the \$650,000 SAV Sensation 5615, tracing twice to the all-time world record income producing cow, SAV Blackcap May 4136, while descending from her full sister, SAV Blackcap May 6517.
- The dam is a maternal sister to a long line of top-selling individuals including the \$30,000 Janssen Voss Hamilton 6113 and the \$110,000 SAV Blackcap May 8051.



**JANSSEN VOSS HAMILTON 6113**  
- \$30,000 maternal brother to  
Lot 23 and to the dams of Lot  
24, 25 and 26.

**SAV BLACKCAP MAY 8051** -  
\$110,000 maternal sister to  
Lot 23 and to the dams of Lot  
24, 25, and 26.





# JANSSEN BLACKCAP MAY FAMILY



**SAV BLACKCAP  
MAY 8962 -**  
Dam of Lot 27.

**JANSSEN BLACKCAP MAY 0068 - Lot 27A**

## 25 JANSSEN BLACKCAP MAY 0067

Birth Date: 3-3-2020		Cow 19803630		Tattoo: 0067						
#*SAV Resource 1441		+Rito 707 of Ideal 3407 7075				\$M				
Payne Fundamental 7137		*SAV Blackcap May 4136				+43				
+*19155123 #AC Duke Girl 57		CAR Tracker 305				\$W				
		#AC Duke Girl 330				+65				
+*SAV Sensation 5615		#*SAV Registry 2831				\$B				
Janssen Blackcap May 7108		*SAV Blackcap May 4136				+124				
+18974271 +*SAV Blackcap May 6517		#SAV 8180 Traveler 004								
		#*SAV May 2397								
CED	BW	WW	YW	SC	DOC	MILK	CW	MB	RE	\$C
+3	+2.4	+62	+123	+50	+16	+33	+56	+0.9	+55	+204

- This impressive heifer from the first calf crop by the Janssen herd sire, Payne Fundamental 7137, is a granddaughter of the Janssen foundation donor, SAV Blackcap May 6517, and traces twice to her famous full sister, SAV Blackcap May 4136, through the proven sires, SAV Resource 1441 and SAV Sensation 5615.
- A maternal brother to the dam of this heifer was the \$30,000 top-selling Lot 1 bull of the 2017 Janssen Production Sale.

## 26 JANSSEN BLACKCAP MAY 0064

Birth Date: 2-29-2020		Cow 19808682		Tattoo: 0064						
#*SAV Resource 1441		+Rito 707 of Ideal 3407 7075				\$M				
Payne Fundamental 7137		*SAV Blackcap May 4136				+43				
+*19155123 #AC Duke Girl 57		CAR Tracker 305				\$W				
		#AC Duke Girl 330				+39				
+*SAV Pedigree 4834		#SAV Pioneer 7301				\$B				
Janssen Blackcap May 7107		*SAV Blackcap May 4136				+115				
+18988027 +*SAV Blackcap May 6517		#SAV 8180 Traveler 004								
		#*SAV May 2397								
CED	BW	WW	YW	SC	DOC	MILK	CW	MB	RE	\$C
+0	+3.6	+48	+99	N/A	N/A	+29	+45	+1.19	+4.9	+192

- A seven-eighths sister to Lot 25 sired by Payne Fundamental 7137 from a dam who is a product of the embryo program and records a progeny IMF ratio of 161 on one head.
- This granddaughter of the Janssen foundation donor, SAV Blackcap May 6517, is also a granddaughter of the proven maternal brothers, SAV Resource 1441 and SAV Pedigree 4834.

## 27 BECK-CSG BLACKCAP MAY 8025

Birth Date: 1-25-2018 Cow +19371217					Tattoo: 8025					
#RR Rito 707					Rito N Bar					\$M
Rito 707 of Ideal 3407 7075					Eriskay of Rollin Rock 3					+52
+13066860 Ideal 3407 of 1418 076					#Ideal 1418 of 8103 4286					\$W
					Ideal 076 of 692 8375					+59
#SAV 8180 Traveler 004					#Sitz Traveler 8180					\$B
SAV Blackcap May 8962					+Boyd Forever Lady 8003					+97
+*16124526 #*SAV May 2397					#SAF 598 Bando 5175					
					SAV May 7238					
CED	BW	WW	YW	SC	DOC	MILK	CW	MB	RE	\$C
+0	+4.1	+64	+107	+84	+25	+27	+49	-35	+63	+178

- This outstanding two-year-old Blackcap May produced her first calf with a birth ratio of 90 balanced with a weaning ratio of 118.
- This cow is a full sister-in-blood to SAV Resource 1441, SAV Renown 3439 and SAV Recharge 3436, sired by the great breeding bull, Rito 707 of Ideal 3407 7075 from the proven producer SAV Blackcap May 8962 who is a full sister to the all-time world record income producing cow, SAV Blackcap May 4136.
- Maternal siblings include the \$30,000 Semex sire, SAV Riata 1178, and the \$18,000 SAV Rush Hour 4063.
- Bred to calve January 23, 2021, to SAV EMBLEM 8073. Examined Safe.

## 27A JANSSEN BLACKCAP MAY 0068

Birth Date: 3-4-2020		Cow 19810734		Tattoo: 0068						
+*SAV Raindance 6848		#*Coleman Charlo 0256				\$M				
SAV Emblem 8074		*SAV Blackcap May 4136				+52				
+*19250937 #*SAV Emblynette 2369		#*SAV 707 Rito 9969				\$W				
		+*SAV Emblynette 7566				+76				
+Rito 707 of Ideal 3407 7075		#RR Rito 707				\$B				
Beck-csg Blackcap May 8025		Ideal 3407 of 1418 076				+132				
+19371217 +*SAV Blackcap May 8962		#SAV 8180 Traveler 004								
		#*SAV May 2397								
CED	BW	WW	YW	SC	DOC	MILK	CW	MB	RE	\$C
-3	+4.4	+89	+151	+1.27	+31	+23	+74	-17	+86	+223

- This sale feature balances an individual birth ratio of 90 with an individual weaning ratio of 118 from the first calf crop by the \$175,000 SAV Emblem 8074 and produced as the first calf from a two-year old dam who is a full sister-in-blood to SAV Resource 1441, SAV Renown 3439 and SAV Recharge 3436.
- The grandam also produced the \$30,000 Semex sire, SAV Riata 1178, and she is a full sister to SAV Blackcap May 4136 and other noted females including the Janssen foundation donor, SAV Blackcap May 6517.



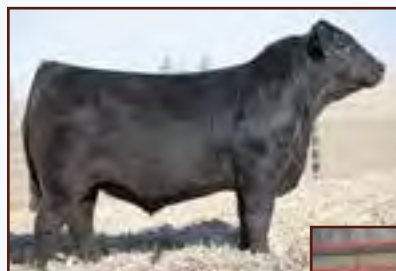
# JANSSEN BLACKCAP MAY FAMILY



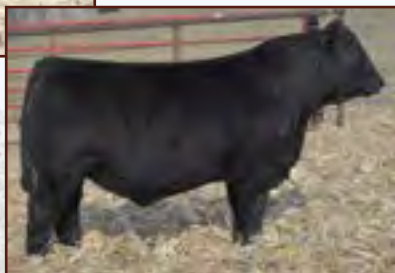
**JANSSEN BLACKCAP MAY 0029** - Lot 28



**SAV BLACKCAP MAY 8194** -  
Grandam of Lots  
28 and 29.



**JANSSEN RECORD BREAKER 7007** - \$16,000 maternal brother to Lot 28.



**JANSSEN JEFFERSON 9019** - \$9,000 maternal brother to Lot 28.



**JANSSEN BLACKCAP MAY 9014** - Lot 29

## 28 JANSSEN BLACKCAP MAY 0029

Birth Date: 1-5-2020 Cow \*19810654 Tattoo: 0029

+\*Sinclair Emulation XXP  
SAV Elation 7899  
+\*18911198 +\*SAV Blackcap May 1782

#\*SAV 707 Rito 9969  
SAV Blackcap May 3936  
#\*17632499 +\*SAV Blackcap May 8194

#\*N Bar Emulation EXT  
#N Bar Primrose Y3051  
+Rito 707 of Ideal 3407 7075  
#\*SAV May 2397  
+Rito 707 of Ideal 3407 7075  
BR Polly 8077-472  
#SAV 8180 Traveler 004  
+SAV May 2436

CED	BW	WW	YW	SC	DOC	MILK	CW	MB	RE	\$M
+4	+2.6	+56	+96	+56	+24	+29	+43	+30	+38	+205

- The result of mating the \$800,000 one-time world record-selling bull, SAV Elation 7899, with the proven Pathfinder Dam, SAV Blackcap May 3936, who has earned a progeny weaning ratio of 108 on five calves and a progeny IMF ratio of 119 on four head.
- A maternal brother, Janssen Record Breaker 7007, is the second heaviest 365-day weight bull and \$16,000 second top-selling bull of the 2018 Janssen Production Sale to Dr. Glen Hansen, while another maternal brother, Janssen Jefferson 9019, is the 2019 Iowa State Fair Reserve Junior Bull Calf Champion who recorded the third heaviest 365-day weight and was the \$9,000 Lot 1 bull of the 2020 Janssen Production Sale to Penhros Farms.

## 29 JANSSEN BLACKCAP MAY 9014

Birth Date: 1-6-2019 Cow 19499793 Tattoo: 9014

#\*Coleman Charlo 0256  
SAV President 6847  
+\*18578964 +\*SAV Blackcap May 4136

#\*SAV Providence 6922  
SAV Blackcap May 3942  
+\*17634077 +\*SAV Blackcap May 8194

#\*OCC Paxton 730P  
+Bohi Abigale 6014  
#SAV 8180 Traveler 004  
#\*SAV May 2397

#\*SAV 004 Predominant 4438  
SAV May 7238  
#SAV 8180 Traveler 004  
+SAV May 2436

CED	BW	WW	YW	SC	DOC	MILK	CW	MB	RE	\$M
+3	+3.3	+59	+101	+66	+21	+28	+39	+05	+74	+187

- This Blackcap May by the \$750,000 one-time world record-selling bull, SAV President 6847, was produced from a maternal sister to the Pathfinder Dam of Lot 28.
- The grandam is a full sister to the Accelerated Genetics sire, MF Net Return 8197.
- Bred to calve February 20, 2021, to SITZ STELLAR 726D. Examined Safe.**



## JANSSEN BLACKCAP MAY FAMILY

- This linebred Blackcap May from the embryo program is by the \$750,000 one-time world record-selling bull, SAV President 6847, from a donor dam who combines a progeny birth ratio of 89 with a progeny weaning ratio of 117 on her first natural calf.
- The dam is a maternal sister to the \$60,000 CRV sire, SAV Institute 4381, by the \$180,000 Genex sire, SAV Regard 4863.
- The grandam is a full sister to the \$200,000 Genex sire, SAV Angus Valley 1867.
- The third dam is the high income producing Pathfinder Dam SAV May 2397.



**SAV BLACKCAP MAY 1804** - Grandam of Lot 30.



**JANSSEN BLACKCAP MAY 0115** - Lot 30

### 30 JANSSEN BLACKCAP MAY 0115

Birth Date: 3-5-2020					Cow +19816079					Tattoo: 0115				
#*Coleman Charlo 0256					#*OCC Paxton 730P					\$M				
SAV President 6847					+Bohi Abigale 6014					+67				
+*18578964					#SAV 8180 Traveler 004					\$W				
+*SAV Blackcap May 4136					#+SAV May 2397					+72				
+*SAV Regard 4863					#+*SAV Resource 1441					\$B				
Janssen Blackcap May 7079					++SAV Blackcap May 5530					+122				
+*18940427					#*SAV Iron Mountain 8066									
+*SAV Blackcap May 1804					++SAV May 2397									
CED	BW	WW	YW	SC	DOC	MILK	CW	MB	RE	\$C				
I+1	I+4.8	I+77	I+126	I+.77	I+25	I+25	I+.52	I+.19	I+.89	+225				

### 31 JANSSEN BLACKCAP MAY 9098

Birth Date: 9-1-2019		Cow 19810558		Tattoo: 9098						
+*SAV Cutting Edge 4857		#*SAV Harvester 0338				\$M				
SAV Cut Above 6271		#+SAV Blackcap May 5530				+53				
*18579035		#SAV Emblynette 8259				\$W				
		+SAV Emblynette 3325				+48				
		#+*SAV Registry 2831		+Rito 707 of Ideal 3407 7075						
Janssen Blackcap May 5009		SAV Madame Pride 0075				\$B				
18242045		+Champion Hill Blkcp May 8245		+SAV Brave 8320		+131				
		+Champion Hill May 6956								
CED	BW	WW	YW	SC	DOC	MILK	CW	MB	RE	\$C
+1	+4.6	+55	+95	I+.66	I+6	+27	I+.36	I+.51	I+.72	+223

- A promising fall heifer from the Blackcap May family by the \$175,000 SAV Cut Above 6271 who was the sixth top-selling bull of the 2017 SAV Sale.
- The dam has a progeny weaning ratio of 104 on two calves and she is backed by the \$90,000 SAV Registry 2831 and the \$92,500 SAV Brave 8320.
- The maternal grandam was produced in the embryo program of the historic Champion Hill herd in Ohio.



**Breeder's Best Six Head, Produce of Dam, First Prize Junior and Senior Get-of-Sires, Reserve Junior Bull Calf Champion, 2019 Iowa State Fair.**



**JANSSEN BLACKCAP MAY 9098** - Lot 31



# JANSSEN ENCHANTRESS FAMILY



SAV ENCHANTRESS 3923 - Lot 32

## 32 S A V ENCHANTRESS 3923

Birth Date: 1-21-2013 Cow \*17634071 Tattoo: 3923

#\*SAV Final Answer 0035  
SAV Pioneer 7301  
#15688392 SAV Blackbird 5297

#+SAV Mandan 5664  
SAV Enchantress 0499  
+16710622 SAV Enchantress 9393

#Sitz Traveler 8180  
SAV Emulous 8145  
#+Boyd New Day 8005  
SAV Blackbird 1082  
#SAV 8180 Traveler 004  
SAV Abigale 0451  
#Pro Trend 9042 LW  
SAV Enchantress 5020

CED	BW	WW	YW	SC	DOC	MILK	CW	MB	RE	\$C
+0	+3.5	+60	+109	+1.47	+17	+27	+35	+.44	+.46	+207

\$M
+50
\$W
+56
\$B
+121

- A proven producer backed by the high maternal Pathfinder Sires SAV Pioneer 7301 and SAV Mandan 5664.
- This cow has a progeny weaning ratio of 100 on five calves and a progeny ribeye ratio of 108 on two head.
- Her progeny includes Janssen Head of State 8083 who was a \$7,500 feature of the 2019 Janssen Production Sale.
- Bred to calve January 2, 2021, to SAV EMBLEM 8074. Examined Safe.**



JANSSEN ENCHANTRESS 0017 - Lot 32A



SAV ENCHANTRESS 0499 - Dam of Lot 32.

## 32A JANSSEN ENCHANTRESS 0017

Birth Date: 1-4-2020 Cow 19812527 Tattoo: 0017

+\*SAV Cutting Edge 4857  
SAV Cut Above 6271  
\*18579035 #SAV Emblynette 8259

#SAV Pioneer 7301  
SAV Enchantress 3923  
\*17634071 +SAV Enchantress 0499

#\*SAV Harvester 0338  
#+SAV Blackcap May 5530  
#+SAV 004 Density 4336  
+SAV Emblynette 3325  
#\*SAV Final Answer 0035  
SAV Blackbird 5297  
#+SAV Mandan 5664  
SAV Enchantress 9393

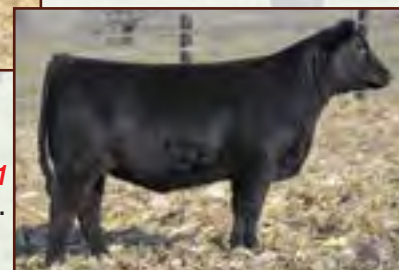
CED	BW	WW	YW	SC	DOC	MILK	CW	MB	RE	\$C
-2	+5.6	+70	+119	+1.06	+11	+28	+39	+47	+63	+226

\$M
+57
\$W
+60
\$B
+130

- This heifer records an individual weaning ratio of 103 by the \$175,000 SAV Cut Above 6271 from a dam who combines a progeny weaning ratio of 100 on five calves with a progeny ribeye ratio of 108 on two head.
- Maternal siblings include Janssen Head of State 8083 who recorded the fifth largest ribeye at 17.2 in the 2019 Janssen Production Sale where he sold as a \$7,500 feature.



JANSSEN HEAD OF STATE 8083  
- \$7,500 son of Lot 32.



JANSSEN ENCHANTRESS 9031  
- Daughter of Lot 32.



# JANSSEN ELBA FAMILY



**JANSSEN ELBA 9101 - Lot 33**

## 33 JANSSEN ELBA 9101

Birth Date: 9-6-2019				Cow 19812630				Tattoo: 9101				
#+*SAV Resource 1441				+Rito 707 of Ideal 3407 7075								\$M
SAV Territory 7225				*SAV Blackcap May 4136								+41
*18913034				#+SAV 004 Density 4336								\$W
*SAV Emblynnette 3293				SAV Emblynnette 7411								+60
SAV Conquest 0169				BR Columbus 426								\$B
SAV Elba 2497				+SAV Blackcap May 5568								+133
17336489				#+SAV Mandan 5664								
SAV Elba 9314				SAV Elba 1094								
CED	BW	WW	YW	SC	DOC	MILK	CW	MB	RE		\$C	
+4	+2.9	+71	+129	1+.92	1+16	+22	1+.54	1+.31	1+.81		+214	

- This fall heifer from the Elba family has an individual birth ratio of 94 combined with an individual weaning ratio of 103, sired by the \$230,000 ST Genetics sire, SAV Territory 7225.
- The dam has progeny IMF and ribeye ratios of 116 and 103 respectively on three head and she is a maternal sister to the \$26,000 third top-selling bull of the 2017 Janssen Sale.
- This heifer stems from the breed icon cow, SAV Elba 1094.

## 34 JANSSEN ELBA 0037

Birth Date: 1-12-2020 Cow 19810645					Tattoo: 0037					
#*Basin Payweight 1682					#*Basin Payweight 006S					\$M
Deer Valley Growth Fund					21AR O Lass 7017					+58
+*18827828 +*Deer Valley Rita 36113					#*PlattmERE Weigh Up K360					\$W
					+Deer Valley Rita 9457					+76
+*SAV Hesston 2217					#*SAV Harvester 0338					\$B
Champion Hill Elba 8771					+SAV Emblynette 3301					+140
+18159696 +Champion Hill Elba 6567					#+SAV Mandan 5664					
					SAV Elba 7099					
CED	BW	WW	YW	SC	DOC	MILK	CW	MB	RE	\$C
-1	+3.4	+75	+130	+15	+21	+29	+61	+56	+50	+240

- A brood cow prospect from the Elba family by the popular Select Sires bull, Deer Valley Growth Fund.
- The dam records a progeny weaning ratio of 104 on three calves along with a progeny ribeye ratio of 116 on two head.
- The grandam is a maternal sister to SAV Elba 1094.



**JANSSEN ELBA 0037 - Lot 34**

## 35 JANSSEN ELBA 0071

Birth Date: 3-4-2020		Cow *19803632		Tattoo: 0071						
#*SAV Resource 1441		+Rito 707 of Ideal 3407 7075		\$M						
Payne Fundamental 7137		*SAV Blackcap May 4136		+68						
+*19155123		#AC Duke Girl 57		\$W						
#*SAV Priority 7283		#CAR Tracker 305		+72						
SAV Elba 3948		#+SAV Final Answer 0035		\$B						
*17546667		#+SAV Blackcap May 5530		+111						
#SAV Elba 0145		#+SAV Bismarck 5682								
		+SAV Elba 8986								
CED	BW	WW	YW	SC	DOC	MILK	CW	MB	RE	\$C
+4	+2.0	+63	+106	+95	+20	+29	+48	+13	+32	+212

- This Elba heifer is from the first calf crop by the Janssen herd sire, Payne fundamental 7137, who was selected as the top-selling bull of the 2019 Payne Sale.
- The dam records a progeny IMF ratio of 107 and a progeny ribeye ratio of 103 on two calves.



**JANSSEN ELBA 0071 - Lot 35**



# JANSSEN AMANDA FAMILY



JANSSEN AMANDA 9008 - Lot 36

## 36 JANSSEN AMANDA 9008

Birth Date: 1-4-2019 Cow 19502354 Tattoo: 9008

		#*Connealy Capitalist 028	#*SAV Final Answer 0035	\$M
LD Capitalist 316			Prides Pita of Conanga 8821	+62
+*17666102 LD Dixie Erica 2053			#CA Future Direction 5321	\$W
			LD Dixie Erica Oar 0853	+78
		+*SAV Cutting Edge 4857	#*SAV Harvester 0338	\$B
Janssen Amanda 7959			#+SAV Blackcap May 5530	+141
+*18977387 SAV Amanda 901			#+SAV Bismarck 5682	
			SAV Amanda 7455	

CED	BW	WW	YW	SC	DOC	MILK	CW	MB	RE	\$C
+7	+2.2	+77	+130	+33	+12	+27	+49	+49	+54	+245

- This bred heifer by the popular Beef 360 sire, LD Capitalist 316, has an individual birth ratio of 98 combined with an individual weaning ratio of 113.
- The dam was produced in the embryo program by the \$260,000 SAV Cutting Edge 4857, and she has a progeny birth ratio of 96 combined with a progeny weaning ratio of 106 on two calves.
- **Bred to calve February 10, 2021, to SAV RAINFALL 6846. Examined Safe.**

## 36A JANSSEN AMANDA 0076

Birth Date: 3-16-2020 Cow \*19803636 Tattoo: 0076

		*SVA The Donald 4030	#*Sitz Investment 660Z	\$M
Topp Republic 8062			#SVA Eileen 9051	+69
+*19223930 +TA Forever 3738			#+*Mohnen Wolf Creek 1871	\$W
			TC Forever 6123	+66
		+*SAV Cutting Edge 4857	#*SAV Harvester 0338	\$B
Janssen Amanda 7959			#+SAV Blackcap May 5530	+126
+*18977387 SAV Amanda 901			#+SAV Bismarck 5682	
			SAV Amanda 7455	

CED	BW	WW	YW	SC	DOC	MILK	CW	MB	RE	\$C
+7	+3.4	+71	+131	+37	+24	+27	+50	+44	+41	+233

- A member of the first calf crop by the Janssen herd sire, Topp Republic 8062.
- This heifer is a maternal sister to Lot 36 from a dam who records a progeny birth ratio of 96 combined with a progeny weaning ratio of 106 on two calves.
- The grandam served as a Janssen donor.



JANSSEN AMANDA 0076 - Lot 36A



JANSSEN AMANDA 0060 - Lot 37

## 37 JANSSEN AMANDA 0060

Birth Date: 2-22-2020 Cow \*19803626 Tattoo: 0060

		#*SAV Resource 1441	+Rito 707 of Ideal 3407 7075	\$M
Payne Fundamental 7137			*SAV Blackcap May 4136	+50
+*19155123 #AC Duke Girl 57			CAR Tracker 305	\$W
			#AC Duke Girl 330	+55
		+*SAV Seedstock 4838	#*SAV Registry 2831	\$B
Janssen Amanda 7029			*SAV Blackcap May 4136	+159
18940413 +SAV Amanda 3956			#*SAV Iron Mountain 8066	
			SAV Amanda 901	

CED	BW	WW	YW	SC	DOC	MILK	CW	MB	RE	\$C
-1	+3.8	+73	+148	+1.56	+17	+23	+66	+29	+53	+256

- A member of the first calf crop by the Janssen herd sire, Payne Fundamental 7137, from a dam who records a progeny birth ratio of 99 combined with a progeny weaning ratio of 102 on two calves along with progeny IMF and ribeye ratios of 111 and 102 respectively on one head.
- A maternal sister to the dam of this heifer sells as Lot 38.

## 38 JANSSEN AMANDA 0063

Birth Date: 2-28-2020 Cow 19803628 Tattoo: 0063

		LT Mission 5041	#*Koupal Advance 28	\$M
LT Advantage 8382			#LT Nordica 3075	+64
+*19251572 LT Blackbird 9308			#TC Aberdeen 759	\$W
			LT Blackbird 6152	+47
		#*SAV Iron Mountain 8066	#TC Gridiron 258	\$B
SAV Amanda 3956			SAV Madame Pride 3249	+97
+18083534 SAV Amanda 901			#+SAV Bismarck 5682	
			SAV Amanda 7455	

CED	BW	WW	YW	SC	DOC	MILK	CW	MB	RE	\$C
+9	+2	+47	+81	-.04	+20	+20	+17	+49	+51	+190

- A member of the first calf crop by the Janssen herd sire, LT Advantage 8382, from a dam with a progeny birth ratio of 92 combined with a progeny weaning ratio of 108 on four calves.
- A maternal brother, Janssen Cow Maker 8079, was one of the heaviest weaning bulls of the 2020 Janssen Production Sale.
- The dam is a full sister to the \$20,000 SAV Mountain View 1477 and a maternal sister to the dam of the \$16,000 Janssen Ponderosa 5022.



JANSSEN AMANDA 0063 - Lot 38



# JANSSEN ANGUS FEMALES



**SAV MISS BOBBIE 2470 -**  
Dam of Lot 39.



**SAV MISS BOBBIE 0045 -**  
Grandam of Lot 39.



**JANSSEN EARNHARDT 5003 - \$12,500 maternal brother to Lot 39.**

## 39 JANSSEN MISS BOBBIE 8027

Birth Date: 1-11-2018 Cow 19205554 Tattoo: 8027

											\$M
											+61
											\$W
											+76
											\$B
											+115
CED	BW	WW	YW	SC	DOC	MILK	CW	MB	RE		\$C
+1	+3.1	+77	+123	+27	+24	+23	+43	+11	+75		+210

- A maternal sister to Janssen Earnhardt 5003, the \$12,500 co-fourth top-selling bull of the 2016 Janssen Sale to Peak Dot Ranch of Saskatchewan, Canada.
- After earning an individual yearling ratio of 123, this daughter of the \$750,000 SAV President 6847 weaned her first calf with a ratio of 106.
- The dam has a progeny weaning ratio of 113 on five calves.
- **Bred to calve January 23, 2021, to SITZ STELLAR 726D. Examined Safe.**

## 39A JANSSEN MISS BOBBIE 0002

Birth Date: 1-1-2020 Cow 19810368 Tattoo: 0002

											\$M
											+63
											\$W
											+79
											\$B
											+133
CED	BW	WW	YW	SC	DOC	MILK	CW	MB	RE		\$C
+4	+2.8	+77	+127	-12	+19	+25	+57	+31	+66		+236

- This heifer records an individual weaning ratio of 106 sired by the popular Beef 360 sire, LD Capitalist 316, from a two-year old dam by the \$750,000 SAV President 6847.
- The dam is a maternal sister to the \$12,500 Janssen Earnhardt 5003, stemming from the high indexing SAV Miss Bobbie 2470.



**SAV AMANDA 901 -**  
Grandam of Lots 36 and 38.



**JANSSEN COW MAKER 8079 -**  
Maternal brother to Lot 38.

## 40 TC RUBY 5257

Birth Date: 3-20-2015 Cow 18315965 Tattoo: 5257

											\$M
											+51
											\$W
											+51
											\$B
											+137
CED	BW	WW	YW	SC	DOC	MILK	CW	MB	RE		\$C
+2	+1.9	+59	+106	+34	+19	+18	+41	+55	+27		+229

- A proven cow bred at TC Ranch in Nebraska where she recorded an individual weaning ratio of 102.
- This cow is by the Genex sire, Bruin Upoar 0070, from a dam by the Pathfinder Sire, TC Romeo 917.
- This cow has a progeny IMF ratio of 141 on two head.
- **Bred to calve January 24, 2021, to E&B PLUS ONE. Examined safe.**

## 41 TC PRIDE 5092

Birth Date: 1-30-2015 Cow 18314856 Tattoo: 5092

											\$M
											+53
											\$W
											+27
											\$B
											+127
CED	BW	WW	YW	SC	DOC	MILK	CW	MB	RE		\$C
-2	+4.3	+41	+86	+1.41	+22	+23	+31	+52	+35		+218

- A daughter of the Genex sire, Shipwheel Montana 2600, bred at TC Ranch in Nebraska from a Pathfinder Dam with a progeny weaning ratio of 106 on five calves and a progeny yearling ratio of 107 on two head.
- A daughter weaned her first calf with a ratio of 109.
- **Bred to calve February 10, 2021, to CRAWFORD GUARANTEE. Examined Safe.**



**JANSSEN MISS BOBBIE 0002 - Lot 39A**

# JANSSEN ANGUS HERD SIRES



**SAV EXPERTISE 7028 - Reference Sire A.**

## A SAV EXPERTISE 7028 [AMF-CAF-D2F-DDF-MIF-NHF-OHF-OSF-RDF]

Birth Date: 2-17-2017 Bull *18911200					Tattoo: 7028					
#*N Bar Emulation EXT					#Emulation N Bar 5522					\$M
Sinclair Emulation XXP					N Bar Primrose 2424					+45
+*15355048 #N Bar Primrose Y3051					#*N Bar Emulation EXT					\$W
					#N Bar Primrose 2429					+57
					#RR Rito 707					\$B
+Rito 707 of Ideal 3407 7075					Ideal 3407 of 1418 076					+133
SAV Blackcap May 1416					#SAV 8180 Traveler 004					
+*16973624 *SAV Blackcap May 4136					#+SAV May 2397					
CED	BW	WW	YW	SC	DOC	MILK	CW	MB	RE	\$C
+0	+2.2	+68	+126	+.64	+24	+19	+61	+.15	+.55	+218

**• FOR REFERENCE ONLY.**

- Birth weight 75 pounds, 205-day weight 1,003 pounds, 365-day weight 1,603 pounds, 365-day ribeye 16.6, IMF 107, 365-day scrotal 41.2 cm.



**PAYNE FUNDAMENTAL 7137 - Reference Sire B.**

- The Janssen junior herd sire selected with their partners as the \$100,000 second lead-off bull of the 2018 SAV Sale from the mating of the unique linebred sire Sinclair Emulation XXP with SAV Blackcap May 1416, the lowest birth EPD cow in the SAV herd and flush sister to SAV Resource 1441.
- Combining calving-ease with performance, incredible phenotype, docility and cow family strength, SAV Expertise 7028 offers limitless potential.
- Featuring his fantastic progeny.



**SAV BLACKCAP MAY 1416 -  
Dam of Reference Sire A.**

## B PAYNE FUNDAMENTAL 7137

Birth Date: 9-26-2017 Bull +*19155123					Tattoo: 7137					
+Rito 707 of Ideal 3407 7075					#RR Rito 707					\$M
SAV Resource 1441					Ideal 3407 of 1418 076					+41
+*17016597					#SAV 8180 Traveler 004					\$W
					#+SAV May 2397					+50
CAR Tracker 305					#Car Tracker 904					\$B
AC Duke Girl 57					+CAR Miss Julie 643					+119
#15180024					CT Miner 308					
#AC Duke Girl 330					AC Duke Girl 618					
CED	BW	WW	YW	SC	DOC	MILK	CW	MB	RE	\$C
-2	+3.6	+55	+118	+.53	+17	+32	+50	+.08	+.43	+195

**• FOR REFERENCE ONLY.**

- Birth weight 84 pounds, 205-day weight 838 pounds, 365-day weight 1,430 pounds, 365-day scrotal 39 cm.

- The Janssen junior herd sire selected as the top-selling bull of the 2019 Payne Angus Sale from the proven mating of the Genex Pathfinder Sire, SAV Resource 1441, with the high income-producing Pathfinder Dam, AC Duke Girl 57.
- His \$31,000 full brother, SAV Don Pepe 4443, serves as Janssen Angus herd sire, and a full sister produced the \$65,000 SAV Exceptional 7279. Another full sister was the \$22,000 top-selling heifer of the 2018 Payne Sale while maternal sisters were the \$27,500 top-selling heifer of the 2019 Payne Sale and the \$15,000 top-selling heifer of the 2020 Payne Sale, and other maternal siblings include the Semex sire SAV Revere 1180, the ABS Global sire SAV Solid Gold 9187 and the Pathfinder Dam SAV Duke Girl 7348.



**A C DUKE GIRL 57 -  
Dam of Reference Sire B.**



## JANSSEN ANGUS HERD SIRES

- The Janssen junior herd sire selected as a favorite in the 2019 Lindskov-Thiel Sale in South Dakota.
- This powerful individual is sired by a son of the famous Koupal Advance 28.
- The dam of this bull is a highlight of the Lindskov-Thiel herd backed by Genex Pathfinder Sire, TC Aberdeen 759 and KCF Bennett Total.
- Featuring his service along with his first progeny.



**LT BLACKBIRD 9308** -

Dam of Reference Sire C.



**SIRE BUYER**

**LT ADVTANGE 8382** - Reference Sire C.

### C **LT ADVANTAGE 8382**

Birth Date: 3-31-2018 Bull *19251572					Tattoo: 8382					
#*Koupal Advance 28					#Koupal Juneau 797					\$M
LT Mission 5041					#Koupal Ebonette 734					+63
18316874 #LT Nordica 3075					#*Connealy Earnan 076E LT Nordica 0082					\$W
#TC Aberdeen 759					#CRA Bextor 872 5205 608					+69
LT Blackbird 9308					#+TC Blackbird 4034					\$B
16463871 LT Blackbird 6152					#KCF Bennett Total LT Blackbird Bando 3054					+130
CED	BW	WW	YW	SC	DOC	MILK	CW	MB	RE	\$C
+5	+8	+65	+110	+25	+4	+25	+43	+71	+71	+232

**• FOR REFERENCE ONLY.**

- Birth weight 86 pounds, 205-day weight 781 pounds, 365-day weight 1,423 pounds, 365-day scrotal 40 cm.

- The Janssen junior herd sire selected as the co-second top-selling bull of the 2019 Topp Sale where his flush sister was the top-selling female also selected by Janssen Angus.
- This outstanding individual features an elite EPD profile by the Topp herd sire, SVA The Donald 4030, from an outstanding donor dam by the proven sire, Mohnen Wolf Creek 1871.
- The dam of this bull is a maternal sister to the Select Sires Pathfinder Sire, TC Thunder 805.
- Featuring his first calf crop.



**TA FOREVER 3738** -

Dam of Reference Sire D.

### D **TOPP REPUBLIC 8062**

Birth Date: 1-12-2018 Bull +*19223930					Tattoo: 8062					
#*Sitz Investment 660Z					#*Connealy Final Product					\$M
SVA The Donald 4030					#+Sitz Ellunas Elite 656T					+76
*17917143 #SVA Eileen 9051					#*SAV Final Answer 0035					\$W
					SVA Eileen 7015					+69
#+*Mohnen Wolf Creek 1871					#+HA Image Maker 0415					\$B
TA Forever 3738					Mohnen Jilt 1283					+144
+17963906 TC Forever 6123					#+TC Grid Topper 355					
					TC Forever 1004					
CED	BW	WW	YW	SC	DOC	MILK	CW	MB	RE	\$C
+4	+3.1	+77	+144	+89	+31	+24	+65	+47	+54	+263

**• FOR REFERENCE ONLY.**

- Birth weight 91 pounds, 205-day weight 924 pounds, 365-day weight 1,432 pounds, 365-day scrotal 42 cm.



**SIRE BUYER**

**TOPP REPUBLIC 8062** - Reference Sire D.

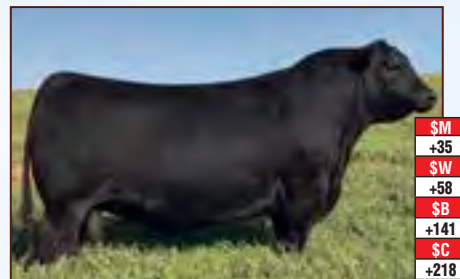


## JANSSEN ANGUS FEATURED AI SIRES



CED	BW	WW	YW	SC	DOC	MILK	CW	MB	RE	\$C
+2	+3.6	+74	+120	+.56	+29	+19	+38	-.01	+.88	+192

**SAV PRESIDENT 6847** - The \$750,000 one-time world record-selling bull from the world record-selling flush of bulls from the 2017 Schaff Angus Valley Sale. This powerful and proven sire transmits outstanding muscling, performance, style, and structural soundness. His progeny include the \$1.51 million all-time world record-selling bull, SAV America 8018, and a multitude of others.



CED	BW	WW	YW	SC	DOC	MILK	CW	MB	RE	\$M	\$W	\$B	\$C
+2	+3.5	+70	+122	+1.37	+21	+21	+55	+.53	+.77	+35	+58	+141	+218

**SAV AMERICA 8018** - The \$1.51 million all-time world record-selling bull from the 2019 SAV Sale.



CED	BW	WW	YW	SC	DOC	MILK	CW	MB	RE	\$M	\$W	\$B	\$C
+1	+1.6	+76	+118	-.20	+30	+20	+77	+.56	+.40	+59	+74	+140	+241

**SAV ELATION 7899** - The \$800,000 one-time world record-selling bull from the 2016 SAV Sale.



CED	BW	WW	YW	SC	DOC	MILK	CW	MB	RE	\$M	\$W	\$B	\$C
+13	+.1	+61	+116	+.94	+22	+29	+26	+.65	+.58	+84	+71	+116	+234

**SAV RAINFALL 6836** - The \$460,000 second top-selling bull from the all-time record-selling flush of bulls from the 2017 Schaff Angus Valley Sale. He went on to become the most popular bull in the Select Sires AI Stud. His outstanding progeny include SAV Downpour 8794, the \$100,000 third top-selling bull of the 2019 Schaff Angus Valley Sale, and SAV Bloodline 9578, the \$250,000 top-selling bull of the 2020 Schaff Angus Valley Sale where another son was the \$100,000 co-third top-selling bull.



CED	BW	WW	YW	SC	DOC	MILK	CW	MB	RE	\$M	\$W	\$B	\$C
1+2	1+2.3	1+69	1+125	+.93	+23	1+27	+68	+.71	+.64	+67	+71	+158	+272

**SAV BLOODLINE 9578** - The \$250,000 top-selling bull of the 2020 SAV Sale.



CED	BW	WW	YW	SC	DOC	MILK	CW	MB	RE	\$M	\$W	\$B	\$C
+4	+2.7	+65	+129	+.08	+23	+33	+66	+.48	+.65	+51	+66	+175	+278

**JINDRA BLACKOUT** - The \$135,000 top-selling bull of the 2018 Jindra Sale.



# JENSSEN ANGUS FEATURED AI SIRES



\$M
+60
\$W
+76
\$B
+148
\$C
+252

CED	BW	WW	YW	SC	DOC	MILK	CW	MB	RE
+11	-.6	+87	+114	+.49	+12	+28	+53	+.66	+.57

**LD CAPITALIST 316** - The most popular sire in the history of the Beef 360 AI Stud who has sired a multitude of top-sellers throughout the breed.



\$M
+64
\$W
+91
\$B
+169
\$C
+283

CED	BW	WW	YW	SC	DOC	MILK	CW	MB	RE
+10	+1.5	+87	+154	+.51	+26	+29	+78	+.58	+.59

**DEER VALLEY GROWTH FUND** - One of the most popular members of the Select Sires AI Stud, sired by Basin Payweight 1682.



\$M
+61
\$W
+62
\$B
+148
\$C
+253

CED	BW	WW	YW	SC	DOC	MILK	CW	MB	RE
+8	+.4	+60	+117	+.98	+20	+26	+43	+.67	+.98

**WOODHILL BLUEPRINT** - \$50,000 member of the Select Sires AI Stud who was the top-selling Lot 1 bull of the 2018 Woodhill Sale.



\$M
+79
\$W
+67
\$B
+167
\$C
+296

CED	BW	WW	YW	SC	DOC	MILK	CW	MB	RE
+10	-.2	+64	+125	+.19	+25	+23	+51	+.92	+.83

**E&B PLUS ONE** - The \$68,000 top-selling Lot 1 bull of the 2019 Benoit Sale who went on to sell a 10% interest for \$100,000 as Lot 1 of the 2019 National Finals Sale.



\$M
+49
\$W
+67
\$B
+133
\$C
+222

CED	BW	WW	YW	SC	DOC	MILK	CW	MB	RE	\$C
+1	+3.2	+85	+155	+1.02	+29	+18	+68	+.14	+.90	+222

**SAV TERRITORY 7225** - The \$230,000 second top-selling Lot 1 bull of the 2018 Schaff Angus Valley Sale. This outstanding performance sire has taken his place as the top breeding son of the legendary Genex Pathfinder sire, SAV Resource 1441, who has twice ranked second for annual registrations. His progeny include the \$135,000 second top-selling and \$100,000 co-third top-selling bulls of the 2020 Schaff Angus Valley Sale.



\$M
+51
\$W
+73
\$B
+174
\$C
+277

CED	BW	WW	YW	SC	DOC	MILK	CW	MB	RE	\$C
-2	+3.4	+82	+151	+1.37	+27	+25	+72	+.47	+1.00	+277

**SAV EMBLEM 8074** - The \$175,000 co-second top-selling bull of the 2019 Schaff Angus Valley Sale. This son of the \$450,000 ST Genetics sire, SAV Raindance 6848, is from the famous Pathfinder Dam, SAV Emblynette 2369, backed by a long line of top-producing females from the time-tested Emblynette family. His maternal siblings include SAV Bloodline 9578, the \$250,000 top-selling bull of the 2020 SAV Sale, where their maternal sister was the \$450,000 top-selling female, plus SAV Ajax 8885 who is the \$75,000 top-selling bull of his sire group in the 2019 SAV Sale, and a maternal sister who was the \$100,000 second top-selling heifer of the 2018 SAV Sale.



## THESE JANSSEN ANGUS HEIFERS SELL NOVEMBER 15, 2020



**JANSSEN MADAME PRIDE 0054 - Lot 1A**



**JANSSEN MADAME PRIDE 0110 - Lot 1B**



**JANSSEN GREYSTONE JANET 0007 - Lot 8**



**JANSSEN EMBLYNETTE 0018 - Lot 10**



**JANSSEN EMBLYNETTE 0006 - Lot 11**



**JANSSEN EMBLYNETTE 0019 - Lot 12**



**JANSSEN EMBLYNETTE 0024 - Lot 14**



**JANSSEN BLACKCAP MAY 0068 - Lot 27A**



**JANSSEN MADAME PRIDE 0009 - Lot 2**



**JANSSEN MADAME PRIDE 0001 - Lot 3**