



Angus Bull Sale

Saturday • February 20, 2021 • Noon
At the Janssen Angus Sale Headquarters
1070 Pitzer Road, Earlham, IA 50072

JANSSEN DOW JONES 0005
Lot 1





Jon & Maradith Janssen

HOME ADDRESS: 36251 Hull Ct. • Earlham, IA 50072

SALE ADDRESS: 1070 Pitzer Road, Earlham, IA 50072

(515) 468-8221

janssenangus.com

janssenangus1477@gmail.com

janssenangus.com

Jon and Maradith Janssen Family

Welcome to the 2021 Janssen Angus "Performance Brand" Bull Sale!

Friends, we have never experienced a year like 2020! Through all of the craziness the one thing that has remained constant is the demand and popularity of GOOD Angus cattle.

Our fall female sale was absolutely one of the most rewarding auctions that our family has ever hosted. There were no crazy high top-sellers, but the average was a very solid \$5,620 per head, and for that we are so thankful and proud. The bull mates to the heifer calves that made the success of the female sale are so special that as I always say "THIS IS THE ONE SALE IN IOWA THAT YOU CANNOT AFFORD TO MISS!" The weights on the bulls has never been better. We can contribute that to genetic advancement for sure, but also some management adjustments. We early weaned the bull calves in August. As we all know in our area, we had a lack of rain late in the growing season that forced us to do things that we normally would not do. The fact that they have been on feed for at least a month longer than ever has produced amazing yearling performance, but now, after test, we have lowered the energy level of their ration from 54 MCAL down to 48 MCAL in order to have the bulls ready for turnout and ready to breed cows! Zero added corn to a ration of silage, gluten and grass hay!

You will notice new sire groups this year highlighted by two sons of Deer Valley Growth Fund. These two are performance machines with balanced traits for calving-ease and carcass excellence. The sons of our herd bulls we are very proud of including the high octane sons of Payne Fundamental and the low birth weight, balanced trait, maternal sons of LT Advantage. We have learned the best way to mate AI sires like SAV President, SAV Rainfall, SAV Territory, SAV Elation, SAV Expertise and Woodhill Blueprint in order to maximize genetic and phenotypic perfection!

All Angus bulls have been evaluated with the Angus GS Genomic test, so that you can be assured that your investment is more accurately represented with enhanced EPD values.

We have culled the bottom 20% of the bulls this year as to only offer the top end in this auction. We came to the conclusion that everyone has a bottom end, including us. The number of bulls we are offering is lower than in the past, but the QUALITY is without a doubt the BEST ever! Make no mistake, these bulls are bred with YOUR PROFITABILITY in mind, and only our top end are being sold. No private treaty on the bottom end, they are steers.

Thank you so much for your trusting Janssen Angus as your source for BULL POWER! We aim to keep this family owned and operated Angus herd to the highest standards of breeding excellence and continue to cultivate the relationships that we so dearly treasure!

See you the third Saturday of February, and may God Bless you and your family in the new year!

Jon and Maradith Janssen

Please call now to schedule a visit to the farm to view the bulls offered in this sale! 515-468-8221

The Janssen Angus Sale facility is located
less than 20 miles west of Des Moines, Iowa.





SALE DAY PHONES:

Jon Janssen cell - (515) 468-8221

Kurt Schaff cell - (816) 520-6447



AUCTIONEER: Matt Lowery (308) 750-6119

SALE MANAGER: American Angus Hall of Fame - (816) 532-0811

Tom Burke Kurt Schaff Jeremy Haag

(816) 853-2697 (816) 520-6447 (816) 516-1309

Buyers unable to attend the sale may send their bids to the Sale Manager, Regional Manager, Field Representatives or Auctioneer.

LIVESTOCK PUBLICATION REPRESENTATIVES:

Jeff Mafi, *Angus Journal*

Tom Rooney, *Special Assignment*

Chris Smith, *Livestock Plus*

DIRECTIONS TO THE SALE SITE: The new, heated Janssen Angus Sale Headquarters is located at 1070 Pitzer Road, Earlham, Iowa, 50072. Take the 100 exit off of Interstate 80, roughly 20 miles west of Des Moines, then go south approximately 1.5 miles to sale headquarters, located on county highway P53.

ACCOMMODATIONS:

AmericInn - Stuart Iowa - (515) 523-9000. 9 miles from sale headquarters.

America's Best Value Inn and Suites - Stuart Iowa - (515) 523-2888. 9 miles from sale headquarters.

Hampton Inn - West Des Moines Iowa - (515) 223-4700. 23 miles from sale headquarters.

Holiday Inn Hotel and Suites - West Des Moines Iowa - (515) 309-3900. 23 miles from sale headquarters.

TRANSPORTATION: Des Moines International Airport is served by numerous carriers and direct flights from metro areas across the US and Canada. Janssen Angus sale headquarters is 30 miles from Des Moines International Airport. Omaha International Airport is roughly 100 miles from Janssen Angus and served by same carriers as Des Moines.

Both airports are equipped with rental car vendors and free hotel shuttles to most Des Moines/West Des Moines hotel chains, but early ticket and room booking is highly recommended, as Iowa Beef Expo is going on the week of Janssen Angus sale which fills hotels and rental vendors.

TERMS AND CONDITIONS: The entire sale offering is guaranteed to be reproductively sound in accordance with the terms and conditions as recommended by the American Angus Association. (http://www.angus.org/Pub/suggested_sale_terms.pdf). In the event of a problem, the buyer is responsible to contact Janssen Angus immediately, return the animal to Janssen Angus and if it does not respond as a satisfactory breeder, the buyer will have the option to select a suitable replacement or take a sale credit.

SEMEN INTEREST: Unless otherwise listed, Janssen Angus is selling 2/3 interest and full possession in each bull, and retains 1/3 semen revenue sharing interest. Each bull is guaranteed to pass a breeding soundness exam, but there is no guarantee on bulls freezing semen unless otherwise negotiated with Janssen Angus prior to sale.

Angus Bull Sale

Saturday • February 20, 2021 • Noon

At the Janssen Angus Sale Headquarters

1070 Pitzer Road, Earlham, IA 50072

SIGHT UNSEEN PURCHASES: If you are unable to attend the sale, but want to place a bid, please call Jon Janssen, Kurt Schaff or the auctioneer or sale representatives. We will handle your bid as if it were our own personal investment and your satisfaction is completely guaranteed!

PERFORMANCE INFORMATION: All performance info is from AHIR, except for the 365-day weights and WDA, which are calculated from December actual weight using lifetime average daily gain, to more realistically reflect the bulls' weights at a year of age.

SCROTAL CIRCUMFERENCE: Scrotal Circumference information will be available sale day also posted to our website several days before auction time.

CATTLE VIEWING: Anyone wishing to see the sale offering is welcome at any time. Please call in advance to set up a time to view cattle at the farm. All sale cattle will be available to view the entire week before the sale at the Janssen Angus Sale Headquarters.

VIDEO: A pre-recorded video of each animal will be available a couple of weeks prior to the sale on the Janssen Angus website.

SALE ORDER: Sale order will be posted on our website prior to auction day.

SUPPLEMENTAL INFORMATION: A supplemental sheet will be available sale day with complete and up-to-date information. Announcements from the auction block take precedence over sale book information.

HERD HEALTH: All cattle will be accompanied by proper health certificates for immediate shipment.

DELIVERY: Janssen Angus is offering free delivery on all bulls selling in the sale. We will either deliver the bulls personally or contract suitable trucking to accomplish safe and prompt arrival of your investment. All cattle will be delivered to the buyer within a week or two after the sale unless otherwise negotiated with Janssen Angus. Canadian purchases will be available to be picked up at the farm following completion of health testing and delivery arrangements will be the buyer's responsibility. Janssen Angus will assist in any way we can.

\$100 PER BULL DISCOUNT IF YOU HAUL YOUR BULL HOME ON SALE DAY!

LIVESTOCK MORTALITY INSURANCE: James Bessler (815) 762-2641 Dakota Ag Insurance, Jared Mohnen (605) 682-1368

LIABILITY: Janssen Angus assumes no liability for injuries or accidents that happen on the sale premises.

FOOD AND REFRESHMENTS: Will be available sale day

Sale book prepared by the Sale Managers, TOM BURKE, KURT SCHAFF, JEREMY

HAAG, AMERICAN ANGUS HALL OF FAME,
At the WORLD ANGUS HEADQUARTERS,
PO Box 660, Smithville, MO 64089-0660.
Phone: (816) 532-0811. Fax: (816) 532-0851.
E-Mail: angushall@angushall.com - www.angushall.com



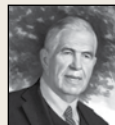
DVAuction
Broadcasting Real-Time Auctions



Visit the Angus Journal Web site, www.angus.org and view this sale book online. *References:* American Angus Association®, AHIR®, AngusSource®, CAB®, Pathfinder®. EPDs contained in the original printed version of this sale book were current as of the printing date. Digital versions of this sale book online at angus.org will have EPDs updated every Friday. Any PDFs downloaded from the website will contain EPDs current as of the date of the download.

COMMENTS FROM THE SALE MANAGERS

Janssen Angus - The Performance Brand!



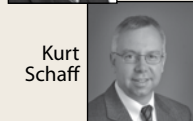
Tom
Burke

Plan now to be on hand for the Spring 2021 Edition of the Janssen Angus Production Sale. This offering features an impressive line-up of bulls representing the best ever produced in the Janssen program.

An impressive group of brothers sale sired by SAV President 6847, SAV America 8018, SAV Rainfall 6846, SAV Territory 7220, SAV Emblem 8074, SAV Expertise 7028, SAV Elation 7899, Deer Valley Growth Fund, Woodhill Blueprint, and more. Certainly, you'll be impressed with the quality and incredible value that these bulls present.

It is a pleasure and privilege to work with the Janssen family in the presentation of this outstanding sale offering. After hosting a string of successful Angus Bull and Female sales, you can expect even more from this latest sensational event. This sale will take place at the Angus sale facility located less than 20 miles west of Des Moines, Iowa. We look forward to seeing you sale day. If we can be of assistance in any way with your selection decisions, please don't hesitate to call.

Sincerely,



Kurt
Schaff



Jeremy
Haag

Tom Burke
Tom Burke
(816) 853-2697

Kurt Schaff
Kurt Schaff
(816) 520-6447

Jeremy Haag
Jeremy Haag
(816) 516-1309

JANSSEN DOW JONES 0005



365 WT: 1545



JANSSEN BESSIE HEIRESS 6028 - Dam of Lot 1,
pictured post-weaning.

JANSSEN DOW JONES 0005 - Lot 1

1 JANSSEN DOW JONES 0005

Birth Date: 01-03-2020		Bull #19810625		Tattoo: 0005		BW				
**Basin Payweight 1682		#*Basin Payweight 0065				71				
*Deer Valley Growth Fund		21AR O Lass 7017				205 WT				
18827828		*Plattmerra Weigh Up K360				1004				
*Deer Valley Rita 36113		*Deer Valley Rita 9457								
ANGUSGS						12-18 WT 1465				
*SAV Seedstock 4838		**SAV Registry 2831				365 WT 1545				
*Janssen Bessie Heiress 6028		*SAV Blackcap May 4136				WDA 4.23				
18630673		#SAV Bessie Heiress 3946								
BW	WW	YW	SC	DOC	MILK	CW	MB	RE	\$W	\$C
+5	+87	+154	+.75	+31	+25	+81	+.29	+.99	+92	+297

- SELLING 80% SEMEN REVENUE SHARING INTEREST AND FULL POSSESSION.
- This unique and impressive herd sire candidate could well be the most valuable bull ever produced in the history of Janssen Angus.
- Representing his remarkable performance heritage, this popular bull balances a modest individual birth ratio of 85 with an outstanding weaning ratio of 125 combined with a 365-day weight of 1,545 which ranks in the top five of the entire Janssen calf crop, and a CED of +12.



SAV BESSIE QUEEN 7258 - *Fourth dam of Lot 1.*



JANSSEN EXECUTIVE 8056 -
Maternal brother to the dam of
Lot 1.



JANSSEN GRANT 9052 -
Maternal brother to the dam
of Lot 1.

JANSSEN NASDAQ 0012



365 WT: 1655

JANSSEN NASDAQ 0012 - Lot 2

2 JANSSEN NASDAQ 0012

JANSSEN MADAME PRIDE 8028 -
Dam of Lot 2, pictured post-weaning.



Birth Date: 01-04-2020	Bull *19810608	Tattoo: 0012	BW
#**Basin Payweight 1682	#**Basin Payweight 006S		73
*Deer Valley Growth Fund	21AR O Lass 7017		205 WT
18827828	#Plattmehere Weigh Up K360		1135
*Deer Valley Rita 36113	*Deer Valley Rita 9457		
ANGUSGS		12-18 WT	1565
*SAV President 6847	#**Coleman Charlo 0256	365 WT	1655
*Janssen Madame Pride 8028	*SAV Blackcap May 4136	WDA	4.53
19326989	#SAV Pioneer 7301		
	*SAV Madame Pride 8827		

BW	WW	YW	SC	DOC	MILK	CW	MB	RE	\$W	\$C
+2.6	+97	+162	+42	+27	+21	+78	+11	+63	+92	+246

- The heaviest 205-day weight and heaviest 365-day weight bull of the entire Janssen calf crop balancing a modest individual birth ratio of 95 with an incredible individual weaning ratio of 142 as the first calf from a highly productive two year old dam by the \$750,000 one-time world record-selling bull SAV President 6847.
- This paternal brother to Lot 1 is sired by the popular Select Sires bull Deer Valley Growth Fund who combines moderate birth weight and high growth with a pedigree that blends the proven Pathfinder Sires Basin Payweight 1682 and Plattmehere Weigh Up K360.

- The famous maternal grandam of this bull was selected by Voss Angus as the \$20,000 top-selling Lot 1 female of the 2020 Janssen Female Sale and she balances a progeny birth ratio of 91 with a progeny weaning ratio of 103 on three natural calves with three daughters in production who post a collective progeny weaning ratio of 114.
- A flush of five maternal brothers to the dam of this bull averaged nearly \$9,000 with the top of \$10,250 in the 2019 Janssen Production Sale, while their maternal sister is the \$11,000 second top-selling bred heifer in the 2017 Janssen Female Sale.
- This bull is from the same branch of the Madame Pride Family that produced the \$55,000 ABS Global Sire Janssen Wyatt Earp 5110 and the \$30,000 Alta Genetics sire Janssen Daytona 5105.



JANSSEN WYATT EARP 5110 -
Maternal brother to the
grandam of Lot 2.

JANSSEN DAYTONA 5105 -
Produced from a maternal sister
to the grandam of Lot 2.



JANSSEN MADAME PRIDE 4502 - Grandam of Lot 2 and dam of Lots 7-10, 15, 17-18, 30-31.

JANSSEN RAINFALL BULLS



JANSSEN RAINFALL 0013 - Lot 3

365 WT: 1428

- A special favorite by the most widely used member of the Select Sires AI stud SAV Rainfall 6846 who is the \$460,000 second top-selling bull from the world record-selling flush of bulls.
- This bull has an individual birth ratio of 89 combined with an individual weaning ratio of 117, tracing twice to the Pathfinder Dam SAV May 2397 through the maternal sisters SAV Blackcap May 4136 and SAV Blackcap May 1804.



SAV BLACKCAP MAY 1804 - Grandam of Lot 3.

3 JANSSEN RAINFALL 0013

Birth Date: 01-04-2020		Bull *19810567		Tattoo: 0013		BW				
						73				
						205 WT				
						937				
						12-18 WT 1350				
						365 WT 1428				
						WDA 3.91				
BW	WW	YW	SC	DOC	MILK	CW	MB	RE	\$W	\$C
+2.6	+78	+134	+99	+19	+32	+55	+50	+98	+86	+256

4 JANSSEN RAINFALL 0004

Birth Date: 01-02-2020		Bull *19810584		Tattoo: 0004		BW				
						74				
						205 WT				
						934				
						12-18 WT 1405				
						365 WT 1405				
						WDA 3.85				
BW	WW	YW	SC	DOC	MILK	CW	MB	RE	\$W	\$C
-3	+67	+118	+81	+22	+31	+44	+65	+70	+83	+256

- Recommended for heifers and cows.



JANSSEN RAINFALL 0004 - Lot 4

365 WT: 1405

- This top performing herd sire prospect by the popular Select Sires bull SAV Rainfall 6846 balances a modest individual birth ratio of 87 combined with an impressive individual weaning ratio of 116, from a proven dam who combines a progeny birth ratio of 95 with a progeny weaning ratio of 106 on five calves.
- A maternal brother with a 1,569 pound 365-day weight is the \$12,000 third top-selling bull of the 2018 Janssen Production Sale and another with a 1,503 pound 365-day weight is an \$8,000 feature from the 2019 sale.



JANSSEN BLACK DIAMOND 8019 - Maternal brother to Lot 4.

JANSSEN PRESIDENT BULLS

- This powerful fall yearling bull from the embryo program is by the \$750,000 SAV President 6847 from a proven donor dam who balances a progeny birth ratio of 97 with a progeny weaning ratio of 104 on three natural calves combined with a progeny IMF and ribeye ratios of 104 and 103 respectively on 10 head, and was selected by Voss Angus as the \$17,500 second top-selling cow of the 2020 Janssen Female Sale where a maternal sister to this bull was the \$16,000 top-selling bred heifer.
- Another maternal sister is the \$12,500 second top-selling heifer calf of the 2017 Janssen Female Sale.



JANSSEN MADAME PRIDE 5102 - Dam of Lots 5 and 6.



JANSSEN PRESIDENT 9105 - LOT 5

5 JANSSEN PRESIDENT 9105

Birth Date: 10-15-2019

Bull *19801313

Tattoo: 9105

BW

79

205 WT

1091

12-18 WT 1585

365 WT NA

WDA NA

##*Coleman Charlo 0256
+*SAV President 6847
18578964 *SAV Blackcap May 4136

##*OCC Paxton 730P
+Bohi Abigale 6014
#SAV 8180 Traveler 004
##*SAV May 2397

ANGUSGS ##*SAV Harvester 0338
+*Janssen Madame Pride 5102
18231629 +SAV Madame Pride 8827

##*SAV Heritage 6295
+*SAV Emblynnette 7749
##*SAV 004 Density 4336
SAV Madame Pride 2330

BW	WW	YW	SC	DOC	MILK	CW	MB	RE	\$W	\$C
+2.9	+73	+126	+84	+25	+24	+38	+23	+70	+70	+204

6 JANSSEN PRESIDENT 0020

Birth Date: 01-04-2020

Bull *19803615

Tattoo: 0020

BW

86

205 WT

759

12-18 WT 1150

365 WT 1301

WDA 3.34

##*Coleman Charlo 0256
+*SAV President 6847
18578964 *SAV Blackcap May 4136

##*OCC Paxton 730P
+Bohi Abigale 6014
#SAV 8180 Traveler 004
##*SAV May 2397

ANGUSGS ##*SAV Harvester 0338
+*Janssen Madame Pride 5102
18231629 +SAV Madame Pride 8827

##*SAV Heritage 6295
+*SAV Emblynnette 7749
##*SAV 004 Density 4336
SAV Madame Pride 2330

BW	WW	YW	SC	DOC	MILK	CW	MB	RE	\$W	\$C
+3.1	+60	+111	+39	+23	+23	+26	+39	+32	+52	+183

- A full brother to Lot 5 and full brother-in-blood to the heifer selected by Fletcher Nichols as the \$16,000 top-selling bred heifer of the 2020 Janssen Female Sale where their dam was the \$17,500 second top-selling cow to Voss Angus.
- The dam of this bull is a maternal sister to the \$20,000 top-selling Lot 1 cow of the 2020 Janssen Female Sale as well as the \$9,500 top-selling cow of the 2020 Janssen Production Sale.



SAV MADAME PRIDE 8827 - Grandam of Lots 5-10, 15, 17-18, 30-31.



JANSSEN PRESIDENT 0020 - LOT 6

365 WT: 1301

JANSSEN PRESIDENT BULLS



JANSSEN PRESIDENT 0102 - Lot 7

- The first of four fantastic flush brothers from the mating of the \$750,000 one-time world record selling bull SAV President 6847 with the famous Janssen Madame Pride 4502 who is the \$20,000 top-selling Lot 1 cow of the 2020 Janssen Female Sale where a flush sister to this bull was one of the most popular heifers.
- Another full sister, Janssen Madame Pride 8028, produced as her first calf the featured Lot 2 bull in this sale and he combines an individual birth weight ratio of 95 with an individual weaning ratio of 142.



JANSSEN MADAME PRIDE 4502 -
Dam of Lots 7-10, 15, 17-18, 30-31.

7 JANSSEN PRESIDENT 0102

Birth Date: 02-20-2020		Bull +*19836937		Tattoo: 0102		BW				
		#*OCC Paxton 730P				88				
		+*Bohi Abigale 6014				205 WT				
		#*SAV 8180 Traveler 004				854				
		#*SAV May 2397								
ANGUS		#*SAV Pioneer 7301		#*SAV Final Answer 0035		12-18 WT 1235				
+*Janssen Madame Pride 4502		#*SAV Blackbird 5297		#*SAV 004 Density 4336		365 WT 1507				
17926403		+*SAV Madame Pride 8827		SAV Madame Pride 2330		WDA 4.13				
BW	WW	YW	SC	DOC	MILK	CW	MB	RE	\$W	\$C
+2.7	+88	+154	+1.83	+20	+29	+76	-0.3	+1.03	+92	+254

JANSSEN PRESIDENT BULLS

- An opportunity to select flush brothers by the \$750,000 SAV President 6847 from the \$20,000 top-selling Lot 1 cow of the 2020 Janssen Female Sale where a flush sister, Janssen Madame Pride 0054, was a featured heifer.
- A full sister produced the high performing Lot 2 bull in this sale.
- Five maternal brothers averaged nearly \$9,000 with a top of \$10,250 in the 2019 Janssen Production Sale while a maternal sister is the \$11,000 second top-selling bred heifer of the 2017 Janssen Female Sale.



JANSSEN MADAME PRIDE 0054 -
Flush sister to Lots 7-10.



JANSSEN PRESIDENT 0105 - Lot 9

9 JANSSEN PRESIDENT 0105

Birth Date: 02-27-2020		Bull +*19836939		Tattoo: 0105		BW				
#*Coleman Charlo 0256		#*OCC Paxton 730P				86				
+*SAV President 6847		+Bohi Abigale 6014				205 WT				
18578964		#SAV 8180 Traveler 004				737				
*SAV Blackcap May 4136		#*SAV May 2397								
ANGUSGS										
#SAV Pioneer 7301		#*SAV Final Answer 0035		12-18 WT		1076				
+*Janssen Madame Pride 4502		SAV Blackbird 5297		365 WT		1404				
17926403		#*SAV 004 Density 4336		WDA		3.72				
+SAV Madame Pride 8827		SAV Madame Pride 2330								
BW	WW	YW	SC	DOC	MILK	CW	MB	RE	\$W	\$C
+2.5	+80	+139	+1.68	+19	+17	+57	+15	+63	+70	+207

10 JANSSEN PRESIDENT 0107

Birth Date: 02-15-2020		Bull +*19810682		Tattoo: 0107		BW				
#*Coleman Charlo 0256		#*OCC Paxton 730P				81				
+*SAV President 6847		+Bohi Abigale 6014				205 WT				
18578964		#SAV 8180 Traveler 004				819				
*SAV Blackcap May 4136		#*SAV May 2397								
ANGUSGS										
#SAV Pioneer 7301		#*SAV Final Answer 0035		12-18 WT		1070				
+*Janssen Madame Pride 4502		SAV Blackbird 5297		365 WT		1370				
17926403		#*SAV 004 Density 4336		WDA		3.52				
+SAV Madame Pride 8827		SAV Madame Pride 2330								
BW	WW	YW	SC	DOC	MILK	CW	MB	RE	\$W	\$C
+4.3	+79	+134	+0.88	+25	+29	+49	-0.1	+86	+79	+214

- The result of this successful blending of the herd sire producing Madame Pride and Blackcap May families from the \$20,000 Janssen Madame Pride 4502 by the \$750,000 SAV President 6847.
- Five maternal brothers average nearly \$9,000 with the top \$10,250 in the 2019 Janssen Production Sale.
- SAV America 8018, a paternal brother from the same family, is the world record-selling bull.



JANSSEN MADAME PRIDE 0110 -
Maternal sister to Lot 7-10, 15, 17, 18, 30-31.



JANSSEN PRESIDENT 0107 - Lot 10

JANSSEN PRESIDENT BULLS



JANSSEN PRESIDENT 0056 - Lot 11

11 JANSSEN PRESIDENT 0056

Birth Date: 02-04-2020	Bull *19816077	Tattoo: 0056	BW
			81
			205 WT
			801
			12-18 WT 1135
			365 WT 1401
			WDA 3.61

BW	WW	YW	SC	DOC	MILK	CW	MB	RE	\$W	\$C
+4.6	+84	+142	+1.22	+23	+22	+55	-.22	+.97	+72	+167

- A product of the embryo program blending the herd sire-producing Madame Pride and Blackcap May families with the proven maternal brothers SAV President and SAV Renown 3439.
- A maternal sister was the featured Lot 2 heifer of the 2020 Janssen Female Sale where the grandam was the \$20,000 top-selling Lot 1 cow.
- The dam of this bull has the progeny birth ratio of 99 combined with a progeny weaning ratio of 108 on the first natural calf.



JANSSEN PRESIDENT 0061 - Lot 12

JANSSEN VOSS HAMILTON 6113 - Maternal brother to Lots 12 and 32.



SAV BLACKCAP MAY 6517 - Dam of Lots 12 and 32.



SAV EMBLYNETTE 9020 - Dam of Lot 13.

12 JANSSEN PRESIDENT 0061

Birth Date: 02-22-2020	Bull *19803644	Tattoo: 0061	BW
			68
			205 WT
			881
			12-18 WT 1140
			365 WT 1401
			WDA 3.83

BW	WW	YW	SC	DOC	MILK	CW	MB	RE	\$W	\$C
+4.4	+64	+114	+5.1	+25	+28	+31	+.29	+.20	+61	+157

- This son of SAV President 6847 from the embryo program is linebred through the full sisters SAV Blackcap May 6517 and SAV Blackcap May 4136.
- A maternal brother, Janssen Voss Hamilton 6113, is the \$30,000 top-selling Lot 1 bull of the 2017 Janssen Production Sale, and other maternal siblings include the \$110,000 top-selling lead-off cow of the 2017 SAV sale whose progeny include the \$85,000 SAV Purebred 4896.

13 JANSSEN PRESIDENT 0112

Birth Date: 02-29-2020	Bull *19803621	Tattoo: 0112	BW
			78
			205 WT
			817
			12-18 WT 1020
			365 WT 1369
			WDA 3.51

BW	WW	YW	SC	DOC	MILK	CW	MB	RE	\$W	\$C
+4.2	+77	+132	+1.28	+21	+31	+50	+.07	+1.03	+75	+210

- This bull combines an individual birth ratio of 93 with an individual weaning ratio of 102, produced as a natural calf from the Janssen foundation donor SAV Emblynette 9020, who combines a progeny birth ratio of 99 and progeny weaning ratio of 109 on five natural calves along with a progeny yearling ratio of 110 on two head, stemming from the rare seventh consecutive generation Pathfinder Dam SAV Emblynette 6660.
- A maternal brother was the \$12,500 fourth top-selling bull of the 2017 Janssen Production Sale and another is the \$10,000 co-third top-selling bull in 2020.

JANSSEN AMERICA BULLS

- A member of the first calf crop by the \$1.51 million world record-selling bull SAV America 8018, produced from a productive donor dam who balances a progeny birth ratio of 87 with a progeny weaning ratio of 113 on 3 natural calves and was selected by Hughes Angus of Oklahoma as the \$9,500 third top-selling cow of the 2020 Janssen Female Sale.
- This bull earned one of the ten heaviest 365-day weights of his entire calf crop and features a pedigree that combines the time tested Emblynnette, Madame Pride and Blackcap May families.



JANSSEN EMBLYNETTE 6006 -
Dam of Lot 14.



JANSSEN AMERICA 0085 - LOT 14

365 WT: 1509

14 JANSSEN AMERICA 0085

Birth Date: 03-31-2020	Bull +*19816201	Tattoo: 0085	BW
			71
+*SAV President 6847	#*Coleman Charlo 0256		205 WT
+*SAV America 8018	*SAV Blackcap May 4136		968
19249580 SAV Madame Pride 0075	#*SAF 598 Bando 5175		
ANGUSGS	SAV Madame Pride 8264		
+*SAV Renown 3439	+Rito 707 of Ideal 3407 7075	12-18 WT	1060
+*Janssen Emblynnette 6006	*SAV Blackcap May 4136	365 WT	1505
18633081 SAV Emblynnette 0268	*SAV Royalty 8471	WDA	4.12
	#*SAV Emblynnette 6019		

BW	WW	YW	SC	DOC	MILK	CW	MB	RE	\$W	SC
+1.3	+65	+104	+72	+22	+29	+31	+28	+51	+76	+151

- Recommended for heifers and cows.

15 JANSSEN AMERICA 0083

Birth Date: 03-25-2020	Bull +*19816202	Tattoo: 0083	BW
			68
+*SAV President 6847	#*Coleman Charlo 0256		205 WT
+*SAV America 8018	*SAV Blackcap May 4136		925
19249580 SAV Madame Pride 0075	#*SAF 598 Bando 5175		
ANGUSGS	SAV Madame Pride 8264		
+*SAV Pioneer 7301	#*SAV Final Answer 0035	12-18 WT	1080
+*Janssen Madame Pride 4502	SAV Blackbird 5297	365 WT	1493
17926403 +*SAV Madame Pride 8827	#*SAV 004 Density 4336	WDA	4.09
	SAV Madame Pride 2330		

BW	WW	YW	SC	DOC	MILK	CW	MB	RE	\$W	SC
+1.8	+62	+113	+77	+24	+19	+38	+24	+59	+55	+192

- Recommended for heifers and cows.

- This double-bred Madame Pride bull is from the first calf crop by the world record-selling bull SAV America 8018, produced from the \$20,000 top-selling Lot 1 cow of the 2020 Janssen Female Sale who balances a progeny birth ratio of 91 with a progeny weaning ratio of 103 on three natural calves. Three maternal sisters post a collective progeny weaning ratio of 114 and they include the dam of the high performing bull featured as Lot 2.
- A flush of five maternal brothers averaged nearly \$9,000 with the top of \$10,250 in the 2019 Janssen Production Sale.



JANSSEN MADAME PRIDE 4502 -
Dam of Lots 7-10, 15, 17-18, 30-31.



JANSSEN AMERICA 0083 - LOT 15

365 WT: 1496

JANSSEN EMBLEM BULLS



JANSSEN EMBLEM 0066 - Lot 16

365 WT: 1407

- A maternal brother to Janssen Washington 8099, the heaviest 205-day weight and third heaviest 365-day weight bull of the 2020 Janssen Production Sale where he was selected by Dr. Glenn Hanson as the \$20,000 top-selling bull.
- A maternal sister was selected by Marshall and Fenner as one of the most popular heifers in the 2020 Janssen Female Sale.
- The highly productive dam of this heifer balances a progeny birth ratio of 97 with a progeny weaning ratio of 111 on three natural calves.



JANSSEN GREYSTONE JANET 5006 - Dam of Lot 16.

16 JANSSEN EMBLEM 0066

Birth Date: 02-29-2020		Bull *19810737		Tattoo: 0066		BW				
						69				
*SAV Raindance 6848		#**Coleman Charlo 0256				205 WT				
*SAV Emblem 8074		*SAV Blackcap May 4136				848				
19250937		#SAV Emblynnette 2369		*SAV 707 Rito 9969						
				*SAV Emblynnette 7566						
ANGUS						12-18 WT 1130				
#SAV International 2020		#SAV Harvester 0338				365 WT 1437				
*Janssen Greystone Janet 5006		#SAV Emblynnette 5483				WDA 3.89				
18242043		+SAV Greystone Jannet 4351		#SAF 598 Bando 5175						
				SAV Jannet 7059						
BW	WW	YW	SC	DOC	MILK	CW	MB	RE	\$W	\$C
+5.0	+82	+139	+93	+13	+25	+50	+42	+64	+72	+206

17 JANSSEN EMBLEM 0070

Birth Date: 03-03-2020		Bull *19810738		Tattoo: 0070		BW				
						71				
*SAV Raindance 6848		#*Coleman Charlo 0256				205 WT				
*SAV Emblem 8074		#SAV Blackcap May 4136				840				
19250937		#*SAV 707 Rito 9969								
#SAV Emblynnette 2369		+SAV Emblynnette 7566								
ANGUS				12-18 WT		1064				
#SAV Pioneer 7301		#SAV Final Answer 0035								
*Janssen Madame Pride 4502		SAV Blackbird 5297				365 WT 1403				
17926403		#SAV 004 Density 4336				WDA 3.72				
+SAV Madame Pride 8827		SAV Madame Pride 2330								
BW	WW	YW	SC	DOC	MILK	CW	MB	RE	\$W	\$C
+1.9	+60	+114	+72	+25	+32	+44	+35	+74	+69	+222

• Recommended for heifers and cows.



JANSSEN Emblem 0070 - Lot 17

365 WT: 1403

- A maternal brother to the bulls featured in this sale as Lot 7-10, 15, 18 and 30-31, produced from the famous Janssen Madame Pride 4502 who is the \$20,000 top-selling Lot 1 cow of the 2020 Janssen Female Sale.
- Three maternal sisters post a collective progeny weaning ratio of 114, while a maternal sister was the \$11,000 second top-selling bred heifer of the 2017 Janssen Female Sale.
- This bull is from the impressive first calf crop by SAV Emblem 8074, the \$175,000 co-second top-selling bull of the 2019 SAV sale.



JANSSEN WASHINGTON 8099 - Maternal brother to Lot 16.

JANSSEN EXPERTISE BULLS

- This impressive prospect earned an individual weaning ratio of 106, sired by the \$100,000 Janssen Genex sire SAV Expertise 7028 from the \$20,000 Janssen Madame Pride 4502, who is the top-selling Lot 1 cow of the 2020 Janssen Female Sale.
- The dam balances a progeny birth ratio of 91 with a progeny weaning ratio of 103 on three natural calves along with a progeny ribeye ratio of 104 on ten head with three daughters in production who post a collective progeny weaning ratio of 114.



JANSSEN MADAME PRIDE 4502-
Dam Of Lots 7-10, 15, 17, 18, 30-31.



JANSSEN EXPERTISE 0026 - Lot 18

365 WT: 1491

18 JANSSEN EXPERTISE 0026

Birth Date: 01-05-2020		Bull *19803618		Tattoo: 0026		BW				
*Sinclair Emulation XXP		#N Bar Emulation EXT				86				
*SAV Expertise 7028		#N Bar Primrose Y3051				205 WT				
18911200		*Rito 707 of Ideal 3407 7075				854				
*SAV Blackcap May 1416		*SAV Blackcap May 4136								
ANGUSGS		#SAV Pioneer 7301		12-18 WT		1325				
*Janssen Madame Pride 4502		#SAV Final Answer 0035		365 WT		1491				
17926403		SAV Blackbird 5297		WDA		3.85				
*SAV Madame Pride 8827		#*SAV 004 Density 4336								
		SAV Madame Pride 2330								
BW	WW	YW	SC	DOC	MILK	CW	MB	RE	\$W	\$C
+1.1	+71	+127	+1.02	+19	+24	+54	+3.7	+60	+73	+229

• Recommended for heifers and cows.

19 JANSSEN EXPERTISE 0034

Birth Date: 01-11-2020		Bull *19803619		Tattoo: 0034		BW				
						87				
**Sinclair Emulation XXP		#*N Bar Emulation EXT				205 WT				
*SAV Expertise 7028		#N Bar Primrose Y3051				869				
18911200		*Rito 707 of Ideal 3407 7075								
*SAV Blackcap May 1416		*SAV Blackcap May 4136								
ANGUSGS		#*SAV Renown 3439		12-18 WT		1370				
Janssen Emblynette 6010		*Rito 707 of Ideal 3407 7075								
18630697		*SAV Blackcap May 4136		365 WT		1564				
*SAV Emblynette 0783		#*SAV Final Answer 0035								
		*EA Emblynette 104		WDA		4.05				
BW	WW	YW	SC	DOC	MILK	CW	MB	RE	\$W	\$C
+3.1	+69	+119	+1.78	+27	+20	+53	+0.3	+58	+60	+200

- This high performing bull earned an individual weaning ratio of 108 and records the fourth heaviest 365-day weight of his calf crop, with a pedigree backed by the \$100,000 Genex sire SAV Expertise 7028 and the \$175,000 Genex Pathfinder Sire SAV Renown 3439.
- The dam records a progeny weaning ratio of 102 on three calves.
- A maternal sister to the dam of this bull produced the dam of Janssen Free Democracy 9001, the \$17,000 second top-selling bull of the Janssen Production Sale to Comstock Farms of Missouri.



JANSSEN FREE DEMOCRACY 9001-
From the same family as Lot 19.



JANSSEN EXPERTISE 0034 - Lot 19

365 WT: 1564

JANSSEN EXPERTISE BULLS



JANSSEN EXPERTISE 0043 - Lot 20

- A top performing bull with an individual birth ratio of 93 combined with an individual weaning ratio of 107 along with a 365-day weight of 1,482 pounds by the \$100,000 Genex sire SAV Expertise 7028.
- The proven dam has a progeny birth ratio of 95 combined with a progeny weaning ratio of 106 on six calves.
- A maternal brother was among the top performing bulls of the 2018 Janssen Production Sale.



SAV LINETTE 0892 - Dam of Lot 20.

20 JANSSEN EXPERTISE 0043

Birth Date: 01-20-2020				Bull 19803620				Tattoo: 0043		BW	
*Sinclair Emulation XXP				#N Bar Emulation EXT						78	
*SAV Expertise 7028				#N Bar Primrose Y3051						205 WT	
18911200 *SAV Blackcap May 1416				*Rito 707 of Ideal 3407 7075						859	
ANGUSGS				*SAV Blackcap May 4136							
#SAV Providence 6922				#SAV 004 Predominant 4438				12-18 WT		1305	
SAV Linette 0892				SAV May 7238				365 WT		1482	
16761631 *SAV Linette 7161				#SAV Net Worth 4200							
				#SAV Linette 5143				WDA		3.96	
BW	WW	YW	SC	DOC	MILK	CW	MB	RE	\$W	\$C	
+1.7	+66	+114	+1.06	+13	+18	+53	+64	+41	+59	+230	

• Recommended for heifers and cows.

21 JANSSEN EXPERTISE 0021

Birth Date: 01-04-2020		Bull 19803616		Tattoo: 0021		BW															
						77															
						205 WT															
						792															
						12-18 WT 1220															
						365 WT 1376															
						WDA 3.53															
BW		WW		YW		SC		DOC		MILK		CW		MB		RE		\$W		\$C	
+2.3		+77		+137		+1.82		+30		+18		+67		+03		+49		+67		+228	



JANSSEN EXPERTISE 0021 - Lot 21

- An impressive son of the \$100,000 Genex sire SAV Expertise 7028 produced as the first calf from a two-year-old dam who has produced in the Topp embryo program.
- The dam came to Janssen Angus as the top-selling female of the 2019 Topp Sale, along with her flush brother, Topp Republic 8062, who was selected as the co-second top-selling bull.
- This bull is from the same family that also produced the Select Sires Pathfinder Sire TC Thunder 805.



TA FOREVER 3738 - Grandam of Lot 21.

JANSSEN ELATION BULLS

- A high performance son of the \$800,000 one-time world record-selling bull SAV Elation 7899 recording an individual weaning ratio of 112, along with the sixth heaviest 365-day weight of his calf crop at 1,530 pounds.
- The Pathfinder Dam of this bull balances a progeny birth ratio of 96 with a progeny weaning ratio of 109 on six calves.
- A maternal brother recorded the heaviest 365-day weight and second heaviest 205-day weight of the 2019 Janssen Production Sale where he was the \$10,000 Lot 1 bull.
- A maternal sister produced as her first calf the featured Lot 1 bull in this sale.



SAV BESSIE HEIRESS 3946 - Pathfinder **JANSSEN ELATION 0036** - Lot 22
Dam of Lot 22.



22 JANSSEN ELATION 0036

Birth Date: 01-11-2020		Bull *19810653		Tattoo: 0036		BW	
**Sinclair Emulation XXP		#N Bar Emulation EXT				91	
**SAV Elation 7899		#N Bar Primrose Y3051				205 WT	
18911198		+Rito 707 of Ideal 3407 7075				900	
**SAV Blackcap May 1782		#+SAV May 2397					
ANGUS		#SAV Prosperity 9131		#+SAV Providence 6922		12-18 WT 1425	
#SAV Bessie Heiress 3946		#SAV Emblynette 3123		#SAV Pioneer 7301		365 WT 1530	
17636667		SAV Bessie Heiress 0049		SAV Bessie Queen 7258		WDA 4.19	
BW	WW	YW	SC	DOC	MILK	CW	MB
+7.2	+88	+142	-13	+29	+21	+72	+72
RE	\$W	\$C					
+46	+69	+261					

23 JANSSEN ELATION 0030

Birth Date: 01-06-2020		Bull 19810673		Tattoo: 0030		BW	
**Sinclair Emulation XXP		#N Bar Emulation EXT				81	
**SAV Elation 7899		#N Bar Primrose Y3051				205 WT	
18911198		+Rito 707 of Ideal 3407 7075				967	
**SAV Blackcap May 1782		#+SAV May 2397					
ANGUS		#+SAV Providence 6922		#+SAV 004 Predominant 4438		12-18 WT 1495	
SAV Erica 0894		#SAV Emblynette 3123		SAV May 7238		365 WT 1595	
16761633		Lizard Creek Erica 373N		#BCC Bushwacker 41-93		WDA 4.37	
				Shadybrook Erica 831			
BW	WW	YW	SC	DOC	MILK	CW	MB
+5.1	+87	+149	+06	+29	+14	+76	+19
RE	\$W	\$C					
+62	+61	+228					

- The second heaviest 365-day weight bull of the calf crop at 1,595 pounds, while combining an individual birth ratio of 96 with an individual weaning ratio of 121 from the dam who balances a progeny birth ratio of 196 with progeny weaning ratio of 106 on seven calves and progeny IMF in ribeye ratios of 106 and 107 respectively on two head.
- Two maternal sisters post a collective progeny weaning ratio of 107 and one of those produced Janssen Black Diamond 8018, the bull with the largest ribeye and both the third heaviest 205 and 365-day weights of the 2019 Janssen Production Sale where he was a \$10,000 feature.



JANSSEN BLACK DIAMOND 8018 -
Produced from a maternal sister to
Lot 23.



JANSSEN ELATION 0030 - Lot 23

JANSSEN ELATION BULLS



JANSSEN ELATION 0038 - Lot 24

- The first of three flush brothers by the \$800,000 one-time world record-selling bull SAV Elation 7899 produced from a donor dam by the \$275,000 Pathfinder Sire SAV Harvestor 0338.
- The donor dam of this bull is a maternal sister to a long line of noted individuals including the eighth generation SAV donor SAV Madame Pride 2304.



SAV MADAME PRIDE 9803 - Grandam of Lots 24-26.

24 JANSSEN ELATION 0038

Birth Date: 01-17-2020		Bull +*19810641		Tattoo: 0038		BW				
+*Sinclair Emulation XXP		#N Bar Emulation EXT				89				
+*SAV Elation 7899		#N Bar Primrose Y3051				205 WT				
18911198		+Rito 707 of Ideal 3407 7075				864				
+*SAV Blackcap May 1782		#+SAV May 2397								
ANGUSGS		#*SAV Harvestor 0338		#*SAV Heritage 6295		12-18 WT 1360				
+*SAV Madame Pride 4530		#*SAV Emblynette 7749		#*SAV Bismarck 5682		365 WT 1491				
17903064		+*SAV Madame Pride 9803		#*SAV Madame Pride 5290		WDA 4.08				
BW	WW	YW	SC	DOC	MILK	CW	MB	RE	\$W	\$C
+2.5	+63	+120	+32	+17	+19	+50	+70	+11	+50	+208

25 JANSSEN ELATION 0040

Birth Date: 01-19-2020		Bull +*19810643		Tattoo: 0040		BW				
+*Sinclair Emulation XXP		#N Bar Emulation EXT				79				
+*SAV Elation 7899		#N Bar Primrose Y3051				205 WT				
18911198		+Rito 707 of Ideal 3407 7075				848				
+*SAV Blackcap May 1782		#SAV May 2397								
ANGUSGS		#*SAV Harvestor 0338		#*SAV Heritage 6295		12-18 WT 1365				
+*SAV Madame Pride 4530		#*SAV Emblynette 7749		#*SAV Bismarck 5682		365 WT 1505				
17903064		+*SAV Madame Pride 9803		#*SAV Madame Pride 5290		WDA 4.12				
BW	WW	YW	SC	DOC	MILK	CW	MB	RE	\$W	\$C
+4.8	+75	+128	+29	+15	+19	+64	+30	+56	+56	+211



JANSSEN ELATION 0040 - Lot 25

- This high performing bull ranks among the top ten 365-day weight bulls of this calf crop.
- This bull features a pedigree that combines the herd sire producing Madame Pride and Blackcap May families by the \$800,000 world record-selling bull SAV Elation 7899.
- This bull stems from the high income producing cows from SAV Madame Pride 9803 and Madame Pride 5290.



SAV MADAME PRIDE 5290 - Third Dam of Lots 24-26.

JANSSEN ELATION and TERRITORY BULLS

- A flush brother to Lots 24 and 25 combining the herd sire-producing Madame Pride and Blackcap May families backed by generations of outstanding sires by the \$800,000 SAV Elation 7899.
- The donor dam is a maternal sister to the eighth generation SAV donor SAV Madame Pride 2304, backed by a long line of top income-producing cows stemming from SAV Madame Pride 0075.



SAV MADAME PRIDE 2304 - Maternal sister to the dam of Lots 24-26.



JANSSEN ELATION 0042 - Lot 26

26 JANSSEN ELATION 0042

Birth Date: 01-20-2020		Bull +*19810646		Tattoo: 0042		BW				
+*Sinclair Emulation XXP		#*N Bar Emulation EXT				78				
+*SAV Elation 7899		#N Bar Primrose Y3051				205 WT				
18911198		+Rito 707 of Ideal 3407 7075				856				
+*SAV Blackcap May 1782		#*SAV May 2397								
ANGUSGS		#*SAV Harvester 0338				12-18 WT 1295				
+*SAV Madame Pride 4530		#*SAV Emblynette 7749				365 WT 1430				
17903064		#*SAV Bismarck 5682				WDA 3.92				
+*SAV Madame Pride 9803		#SAV Madame Pride 5290								
BW	WW	YW	SC	DOC	MILK	CW	MB	RE	\$W	\$C
+2.5	+62	+117	+55	+9	+27	+50	+77	+34	+59	+214

27 JANSSEN TERRITORY 9099

Birth Date: 09-02-2019		Bull *19810647		Tattoo: 9099		BW				
		*Rito 707 of Ideal 3407 7075				81				
#*SAV Resource 1441		#SAV Blackcap May 4136				205 WT				
*SAV Territory 7225		#*SAV 004 Density 4336				872				
18913034		SAV Emblynette 7411								
*SAV Emblynette 3293										
ANGUSGS		#*SAV International 2020		12-18 WT		1435				
#Janssen Miss Bobbie 5062		#*SAV Harvester 0338		365 WT		NA				
18602194		#*SAV Emblynet 5483		WDA		NA				
SAV Miss Bobbie 2470		#SAV Brand Name 9115								
		SAV Miss Bobbie 0045								
BW	WW	YW	SC	DOC	MILK	CW	MB	RE	\$W	\$C
+3.4	+81	+144	+1.33	+15	+21	+66	+01	+80	+72	+242

- A fall yearling bull with an individual weaning ratio of 103 by the \$230,000 ST Genetics sire SAV Territory 7225, produced from a dam by the \$400,000 Pathfinder Sire SAV International 2020.
- The dam of this bull is a maternal sister to Janssen Earnhardt 5003, the \$12,500 co-fourth top-selling bull of the 2006 Janssen Production Sale to Peak Dot Ranch of Saskatchewan, Canada.



SAV MISS BOBBIE 2470 - Grandam of Lot 27.



JANSSEN TERRITORY 9099 - Lot 27

JANSSEN TERRITORY BULLS



JANSSEN TERRITORY 0033 - Lot 28

- This son of the \$230,000 ST Genetics SAV Territory 7225 has earned an individual weaning ratio of 105 from a Pathfinder Dam with a progeny weaning ratio of 107 on 6 calves.
- A maternal brother, Janssen Hayes 9046, was selected by the Alta Genetics AI Stud as a \$10,000 feature of the 2020 Janssen Production Sale.
- A maternal sister, Janssen Emblynette 6037, produced the \$15,000 top-selling heifer calf of the 2020 Janssen Female Sale to Ingram Angus.



JANSSEN EMBLYNETTE 6037 - Maternal sister to Lot 28.

28 JANSSEN TERRITORY 0033

Birth Date: 01-09-2020		Bull *19812629		Tattoo: 0033		BW				
#*SAV Resource 1441		*Rito 707 of Ideal 3407 7075				85				
*SAV Territory 7225		*SAV Blackcap May 4136				205 WT				
18913034		*SAV 004 Density 4336				846				
*SAV Emblynette 3293		SAV Emblynette 7411								
ANGUSGS										
#SAV Providence 6922		#SAV 004 Predominant 4438		12-18 WT		1205				
#SAV Emblynette 3930		SAV May 7238		365 WT		1379				
17634072		#SAV Final Answer 0035								
+SAV Emblynette 0775		+EA Emblynette 104		WDA		3.54				
BW	WW	YW	SC	DOC	MILK	CW	MB	RE	\$W	\$C
+6	+68	+114	+96	+18	+22	+38	+52	+62	+69	+195

• Recommended for heifers and cows.

29 JANSSEN TERRITORY 0028

Birth Date: 01-05-2020		Bull *19810642		Tattoo: 0028		BW				
						82				
						205 WT				
						719				
						12-18 WT 1090				
						365 WT 1242				
						WDA 3.17				
BW	WW	YW	SC	DOC	MILK	CW	MB	RE	\$W	\$C
+1.2	+59	+105	+61	+16	+27	+32	+35	+40	+66	+201

• Recommended for heifers and cows.



JANSSEN TERRITORY 0028 - Lot 29

- This son of the \$230,000 ST Genetics sire SAV Territory 7225 is double bred to both the Emblynette and Blackcap May families from a dam by the \$725,000 one-time world record-selling bull SAV pedigree 4834.
- The grandam is a Pathfinder Dam.
- The grandam is by the Genex Pathfinder Sire SAV Priority 7283.



JANSSEN HAYES 9046 - Maternal brother to Lot 28.

JANSSEN BLUEPRINT BULLS

- The first of two flush brothers produced in the embryo program by the \$50,000 Select Sires bull Woodhill Blueprint produced from a donor dam who is the \$20,000 top-selling Lot 1 cow of the 2020 Janssen Female Sale with a progeny birth ratio of 91 combined with a progeny weaning ratio of 103 on three natural calves and a progeny ribeye ratio of 104 on ten head.
- A flush of five maternal brothers averaged nearly \$9,000 with a top \$10,250 in the 2019 Janssen Production Sale, and a maternal sister is the \$11,000 second top-selling bred heifer of the 2017 Janssen Female Sale while another produced the high performing lot 2 bull in this sale.



JANSSEN MADAME PRIDE 4502 - Dam of Lots 7-10, 15, 17-18 and 30-31.



365 WT: 1424

JANSSEN BLUEPRINT 0109 - Lot 30

30 JANSSEN BLUEPRINT 0109

Birth Date: 02-12-2020		Bull +*19810686		Tattoo: 0109		BW				
*Connealy Confidence Plus		#*Connealy Confidence 0100				77				
*Woodhill Blueprint		Elbanna of Conanga 1209				205 WT				
18876777		*Tehama Sierra Cut Z118				735				
*Woodhill Evergreen Z291-B233		*Woodhill Evergreen U6-Z291								
ANGUS		#SAV Pioneer 7301				12-18 WT 1130				
+*Janssen Madame Pride 4502		#SAV Final Answer 0035				365 WT 1424				
17926403		SAV Blackbird 5297				WDA 3.67				
+SAV Madame Pride 8827		#*SAV 004 Density 4336								
		SAV Madame Pride 2330								
BW	WW	YW	SC	DOC	MILK	CW	MB	RE	\$W	\$C
+1.8	+79	+144	+1.07	+12	+31	+60	+64	+80	+85	+257

- Recommended for heifers and cows.

31 JANSSEN BLUEPRINT 0108

Birth Date: 02-16-2020		Bull +*19810685		Tattoo: 0108		BW				
*Connealy Confidence Plus		#*Connealy Confidence 0100				79				
*Woodhill Blueprint		Elbanna of Conanga 1209				205 WT				
18876777		*Tehama Sierra Cut Z118				807				
*Woodhill Evergreen Z291-B233		+*Woodhill Evergreen U6-Z291								
ANGUS		#SAV Pioneer 7301		#SAV Final Answer 0035		12-18 WT 1015				
+*Janssen Madame Pride 4502		#SAV Blackbird 5297				365 WT 1304				
17926403		+SAV Madame Pride 8827		#*SAV 004 Density 4336		WDA 3.34				
		SAV Madame Pride 2330								
BW	WW	YW	SC	DOC	MILK	CW	MB	RE	\$W	\$C
+1.7	+69	+125	+6.1	+16	+28	+52	+66	+76	+75	+252

- Recommended for heifers and cows.

- This flush brother to Lot 30 is a maternal brother to Lots 7-10, 15, 17-18, as well as, the dams of Lots 2 and 11.
- The dam is the \$20,000 top-selling Lot 1 cow of the 2020 Janssen Female Sale where a flush sister to this bull was also featured.
- Three maternal sisters post a collective progeny weaning ratio of 114.
- The grandam also produced the \$55,000 ABS Global sire Janssen Wyatt Earp 5110.



JANSSEN RENOWN 8109 - Maternal brother to Lots 7-10, 15, 17-18, 30-31.



365 WT: 1304

JANSSEN BLUEPRINT 0108 - Lot 31

JANSSEN SENSATION AND ADVANTAGE BULLS



JANSSEN SENSATION 0101 - Lot 32

- This maternal brother to Lot 12 is linebred through the full sisters SAV Blackcap May 6517 and SAV Blackcap May 4136 sired by SAV Sensation 5615, the \$650,000 top-selling bull of the 2016 sale season.
- A maternal brother was the \$30,000 top-selling Lot 1 bull of 2017 Janssen Production Sale and a maternal sister was the \$110,000 top-selling lead off cow of the 2017 SAV Sale whose progeny include the \$85,000 SAV Purebred 4896.



SAV BLACKCAP MAY 6517 - Dam of Lots 12 and 32.

32 JANSSEN SENSATION 0101

Birth Date: 03-02-2020		Bull +*19839991		Tattoo: 0101		BW				
#*SAV Registry 2831		+Rito 707 of Ideal 3407 7075				74				
+*SAV Sensation 5615		SAV Madame Pride 0075				205 WT				
18258149		#SAV 8180 Traveler 004				726				
*SAV Blackcap May 4136		#*SAV May 2397								
ANGUSGS		#SAV 8180 Traveler 004		#Sitz Traveler 8180		12-18 WT 1130				
+*SAV Blackcap May 6517		+Boyd Forever Lady 8003				365 WT 1437				
15465561		#*SAF 598 Bando 5175		SAV May 7238		WDA 3.94				
#*SAV May 2397										
BW	WW	YW	SC	DOC	MILK	CW	MB	RE	\$W	\$C
+4.1	+77	+130	+1.51	+24	+24	+62	-.14	+46	+64	+171

33 JANSSEN ADVANTAGE 0055

Birth Date: 02-04-2020				Bull 19803622				Tattoo: 0055				BW									
LT Mission 5041				#*Koupal Advance 28								78									
*LT Advantage 8382				#LT Nordica 3075								205 WT									
19251572 LT Blackbird 9308				*TC Aberdeen 759								741									
				LT Blackbird 6152																	
ANGUSGS																					
**+SAV Resource 1441				*Rito 707 of Ideal 3407 7075				12-18 WT				1080									
Janssen Linette 8017				*SAV Blackcap May 4136				365 WT				1336									
19190390 SAV Linette 0892				#+SAV Providence 6922																	
				+SAV Linette 7161				WDA				3.42									
BW		WW		YW		SC		DOC		MILK		CW		MB		RE		\$W		\$C	
+1.9		+65		+102		+1.19		+0		+28		+33		+.26		+.49		+74		+171	

- Recommended for heifers and cows.



JANSSEN ADVANTAGE 0055 - Lot 33

- The son of the Janssen herd sire LT Advantage 8382 who recently joined the Beef 360 AI organization.
- The dam of this bull is a maternal sister to Lot 20 stemming from the Janssen foundation donor SAV Emblynette 0892.
- The grandam has produced multiple sale features for Janssen Angus.



SAV LINETTE 0892 - Grandam of Lot 33.

JANSSEN ADVANTAGE BULLS

- A son of the Janssen Beef 360 LT Advantage 8382.
- The dam combines the proven sire SAV Revere 1180 and SAV International 2020 stemming from the Janssen foundation donor SAV Emblynnette 0268 who was the \$9,000 top-selling cow of the 2017 Janssen Female Sale to Kiesewetter Angus.
- The grandam is a maternal sister to third top-selling cow of the 2020 Janssen Female Sale.



SAV EMBLYNETTE 0268 - Third dam of Lot 34.



JANSSEN ADVANTAGE 0057 - Lot 34

34 JANSSEN ADVANTAGE 0057

Birth Date: 02-15-2020		Bull 19803623		Tattoo: 0057		BW
LT Mission 5041		#*Koupal Advance 28				81
*LT Advantage 8382		#LT Nordica 3075				205 WT
19251572 LT Blackbird 9308		#TC Aberdeen 759				706
ANGUSGS		LT Blackbird 6152				
*SAV Revere 1180		#**SAV 707 Rito 9969		12-18 WT		1040
Janssen Emblynnette 8062		#AC Duke Girl 57		365 WT		1333
19329820		*Janssen Emblynnette 5115		WDA		3.42
		SAV Emblynnette 0268				
BW	WW	YW	SC	DOC	MILK	CW
+1.4	+53	+105	+42	+7	+27	+38
						MB
						+4.1
						RE
						+5.8
						\$W
						+55
						\$C
						+219

- Recommended for heifers and cows.

35 JANSSEN ADVANTAGE 0046

Birth Date: 01-24-2020		Bull 19810650		Tattoo: 0046		BW
LT Mission 5041		#*Koupal Advance 28				73
*LT Advantage 8382		#LT Nordica 3075				205 WT
19251572 LT Blackbird 9308		#TC Aberdeen 759				654
ANGUSGS		LT Blackbird 6152				
*Bruin Upoar 0070		#Sitz Upward 307R		12-18 WT		1050
TC Ruby 5257		*Falcon Blackbird 6071		365 WT		1264
18315965 TC Ruby 2043		#TC Romeo 917		WDA		3.23
		TC Ruby 0109				
BW	WW	YW	SC	DOC	MILK	CW
+1.7	+65	+114	+37	+13	+20	+46
						MB
						+5.3
						RE
						+0.3
						\$W
						+59
						\$C
						+206

- Recommended for heifers and cows.

- An outcross prospect by the Janssen Beef 360 Sire LT Advantage 8382 produced from a dam by the Genex Sire Bruin Upoar 0070.
- The dam was bred at TC Ranch in Nebraska and records a progeny IMF ratio of 141 on two head.



JANSSEN EMBLYNETTE 6006 - Maternal sister to the grandam of Lot 34.



JANSSEN ADVANTAGE 0046 - Lot 35

JANSSEN FUNDAMENTAL BULLS



JANSSEN FUNDAMENTAL 0065 - Lot 36

365 WT: 1573

- A member of the first calf crop by the Janssen herd sire Payne Fundamental 7137 who is enrolled into the Sire Buyer AI organization and was selected as the top-selling bull of the 2019 Payne Angus Sale.
- This bull records an individual birth ratio of 99 combined with an individual weaning ratio of 107 from a dam who is selected from the historic Champion Hill program and has a progeny birth ratio of 99 balanced with a progeny weaning ratio 103 on four calves along with a progeny IMF ratio of 103 on four calves along with a progeny IMF ratio of 114 on one head.
- This bull records the third heaviest 365-day weight of his calf crop.



CHAMPION HILL GEORGINA 7215 - Grandam of Lot 36.

36 JANSSEN FUNDAMENTAL 0065

Birth Date: 02-29-2020			Bull 19803629			Tattoo: 0065			BW	
									84	
**SAV Resource 1441			*Rito 707 of Ideal 3407 7075						205 WT	
*Payne Fundamental 7137			*SAV Blackcap May 4136						856	
19155123			CAR Tracker 305						12-18 WT 1250	
AC Duke Girl 57			*SAV Duke Girl 330						365 WT 1573	
ANGUSGS									WDA 4.31	
*SAV Hesston 2217			**SAV Harvester 0338							
+Champion Hill Georgina 8792			*SAV Emblynette 3301							
18159716			*SAV Pioneer 7301							
*Champion Hill Georgina 7215			*Champion Hill Georgina 6174							
BW	WW	YW	SC	DOC	MILK	CW	MB	RE	\$W	\$C
+4.5	+81	+143	+1.25	+12	+25	+70	+.26	+.79	+73	+239

#*SAV Resource 1441
 +*Payne Fundamental 7137
 19155123 #AC Duke Girl 57
 ANGUS
 +*SAV Hesston 2217
 +Champion Hill Georgina 8792
 18159716 *Champion Hill Georgina 7215

+Rito 707 of Ideal 3407 7075
 *SAV Blackcap May 4136
 CAR Tracker 305
 #AC Duke Girl 330
 #*SAV Harvester 0338
 +SAV Emblynette 3301
 #SAV Pioneer 7301
 +*Champion Hill Georgina 6174

37 JANSSEN FUNDAMENTAL 0058

Birth Date: 02-18-2020				Bull *19803624				Tattoo: 0058				BW									
												80									
												205 WT									
												764									
												12-18 WT 1165									
												365 WT 1462									
												WDA 3.88									
BW		WW		YW		SC		DOC		MILK		CW		MB		RE		\$W		\$C	
+5		+54		+107		+84		+13		+33		+46		+34		+38		+65		+219	

#*SAV Resource 1441
 +*Payne Fundamental 7137
 19155123 #AC Duke Girl 57
 ANGUS
 #*SAV Priority 7283
 #SAV Emblynette 3906
 17634068 SAV Emblynette 1478

+Rito 707 of Ideal 3407 7075
 *SAV Blackcap May 4136
 CAR Tracker 305
 #AC Duke Girl 330
 #*SAV Final Answer 0035
 #*SAV Blackcap May 5530
 #*SAV Mandan 5664
 +SAV Emblynette 0781

- Recommended for heifers and cows.



JANSSEN FUNDAMENTAL 0058 - Lot 37

365 WT: 1462



SAV EMBLYNETTE 0783 - Grandam of Lot 19, and flush sister to the grandam of Lot 28 and third dam of Lot 37.

- A moderate birth weight prospect from the first calf crop by the Janssen herd sire Payne Fundamental 7137 who is enrolled into Sire Buyer AI organization.
- The Pathfinder Dam of this bull has a progeny birth ratio of 98 combined with a progeny weaning ratio of 105 on six calves.
- Two maternal sisters post a collective progeny weaning ratio of 104.

JANSSEN FUNDAMENTAL AND REPUBLIC BULLS



JANSSEN FUNDAMENTAL 0073 - Lot 38

38 JANSSEN FUNDAMENTAL 0073

Birth Date: 03-12-2020	Bull *19803633	Tattoo: 0073	BW
			87
			205 WT
			790
			12-18 WT 1070
			365 WT 1414
			WDA 3.86

BW	WW	YW	SC	DOC	MILK	CW	MB	RE	\$W	\$C
+3.4	+48	+90	-.62	+18	+38	+28	-.15	+.27	+55	+150

- A son of the Sire Buyer bull Payne Fundamental 7137 who was selected as the top-selling bull of the 2019 Payne Angus Sale and serves as a herd sire for the Janssen and Foster Angus programs.
- This bull is produced from a dam backed by SAV International 2020 and SAV Brand name 9115.

39 JANSSEN REPUBLIC 0077

Birth Date: 03-18-2020	Bull 19803637	Tattoo: 0077	BW
			69
			205 WT
			819
			12-18 WT 1080
			365 WT 1434
			WDA 3.98

BW	WW	YW	SC	DOC	MILK	CW	MB	RE	\$W	\$C
+1.1	+70	+141	+.89	+33	+28	+56	+.39	+.62	+69	+228

- Recommended for heifers and cows.
- A member of the first calf crop by Topp Republic 8062, the Janssen herd sire selected as the co-second top-selling bull of the 2019 Topp Sale.
- This bull combines an individual birth ratio of 85 with an individual weaning ratio of 102 from a dam who was produced in the embryo program backed by the Emblynette family.



JANSSEN FUNDAMENTAL 0077 - Lot 39



JANSSEN REPUBLIC 0086 - Lot 40

40 JANSSEN REPUBLIC 0086

Birth Date: 03-31-2020	Bull *19803639	Tattoo: 0086	BW
			85
			205 WT
			773
			12-18 WT 1058
			365 WT 1502
			WDA 4.12

BW	WW	YW	SC	DOC	MILK	CW	MB	RE	\$W	\$C
+3.5	+69	+135	+.88	+30	+23	+71	+.58	+.55	+59	+286

- One of the top bulls of this sire group by the Janssen herd sire Topp Republic 8062, who was selected as the co-second top-selling bull of the 2019 Topp Angus Sale.
- The dam records progeny weaning ratio of 107 on three calves and she is a maternal sister to Lot 23. This bull records one of the ten heaviest 365-day weights.

41 JANSSEN REPUBLIC 0069

Birth Date: 02-29-2020	Bull 19803631	Tattoo: 0069	BW
			86
			205 WT
			759
			12-18 WT 1150
			365 WT 1455
			WDA 3.95

BW	WW	YW	SC	DOC	MILK	CW	MB	RE	\$W	\$C
+3.5	+62	+117	+.29	+31	+31	+51	+.25	+.79	+60	+223

- This son of Topp Republic is from a proven dam with a progeny birth ratio of 99 combined with a progeny weaning ratio of 103 on eight calves along with a progeny IMF and ribeye ratios of 108 and 104 respectively on two head.
- This bull is a maternal sister to the Pathfinder Dam SAV Bessie Heiress 3646 who is in turn the dam of Lot 22 and grandam of Lot 1.



JANSSEN REPUBLIC 0069 - Lot 41

JANSSEN HEREFORD AND SIMMENTAL BULLS



365 WT: 1373

JANSSEN SENSATION 0047 - Lot 42

42 JANSSEN SENSATION 0047

Birth Date: 01/28/2020

B Reg.No.Pdg.

Tattoo: 0047

UPS DOMINO 3027
CHURCHILL SENSATION 028X
43092364 CHURCHILL LADY 7202T ET

CL 1 DOMINO 9126J ET
UPS MISS DIAMOND 1353
GH RAMBO 279R
CL 1 DOMINETTE 301N

TH 89T 755T STOCKMAN 475Z
TH 167A 475Z VERONICA 7046 ET
43905544 TH 702T 17Y VERONICA 167A

TH 223 71I VICTOR 755T
TH 16G 20N GEMINI 89T
TH 22R 16S LAMEAU 17Y
TH 502 P18 VERONICA 702T

12-18 WT 1020

365 WT 1373

WDA 3.54

	CE	BW	WW	YW	SC	MM	CW	RE	MB	BMI\$	BI\$	CHB\$
S	+12.1	-2.4	+49	+68	+1.7	+49	+53	+45	+30	+660	+753	+112
D	-1.3	+4.3	+58	+95	+0.5	+12	+1.50	+15	+04	+309	+381	+68

- Recommended for heifers.
- 0047 is a calving-ease cow-maker with a highly proven pedigree, Churchill Sensation X TH Stockman X TH Lambeau.
- His dam is from the heralded Topp Herefords in North Dakota.

43 JANSSEN ON POINT 0016

Birth Date: 01/04/2020

B Reg.No.Pdg.

Tattoo: 0016

CRR 719 CATAPULT 109
CRR 109 ON POINT 559 ET
43589423 CRR 435 KELLY 161

TH 122 71I VICTOR 719T
CRR 4037 ECLIPSE 808
DM BR SOONER
CRR D03 KELLY 351

GOLDEN OAK OUTCROSS 18U
CHEZ TR MISS OUTCROSS 2733Z
43387324 R SWEET RED WINE 039

GOLDEN-OAK FUSION 3S
GOLDEN-OAK 60D MALLORY 15M
MSU TCF REVOLUTION 4R
R MISS WRANGLER 207

12-18 WT 1220

365 WT 1368

WDA 3.52

	CE	BW	WW	YW	SC	MM	CW	RE	MB	BMI\$	BI\$	CHB\$
S	+4.1	+2.0	+53	+92	+0.4	+36	+58	-0.06	-0.1	+293	+354	+95
D	+2.2	+2.7	+48	+83	+1.3	+18	+63	+53	+11	+358	+423	+101

- Highly maternal, well-made muscle bull.
- He is the result of an embryo purchased from Hoffman Herefords in Nebraska.



365 WT: 1368

JANSSEN ON POINT 0016 - Lot 43

44 JANSSEN UPGRADE 9097

Birth Date: 09/01/2020

B Reg.No.Pdg.

Tattoo: 9097

LLSF UPRISING Z925
HILB/JASS READY 2 RISE
ASA 3328434 HILB CRAZY N LOVE A475S

HEADS UP 20X ET
LLSF UNTOUCHABLE U925
MR HOC BROKER
SS BABYS BREATH P035

S A V 8180 TRAVELER 004
S A V ERICA 0806
+16122831 SHADYBROOK ERICA 831

SITZ TRAVELER 8180
BOYD FOREVER LADY 8003
BON VIEW BANDO 598
SHADY BROOK ERICA 38F

12-18 WT 1465

365 WT N/A

WDA N/A

	CE	BW	WW	YW	SC	MM	CW	RE	MB	API	TI	
S	9.3	2.8	89	128		5.1	17.5	-1.27	-0.4	107.7	78.5	

- SIMMENTAL - ANGUS HYBRID BULL.
- Sired by a powerful son of Uprising and out of a fantastic daughter of SAV 8180 Traveler 004 tracing back to BCC Bushwacker 41-93.
- Hybrid Vigor.



JANSSEN UPGRADE 9097 - Lot 44



JANSSEN ELATION 0030 - Pictured May 2020.

Welcome to
the 31st
Janssen Family
Production Sale.

JANSSEN ANGUS FAMILY



MADLINE JANSSEN



JANSSEN FAMILY CHILDREN



KATIE AND MADLINE JANSSEN



JD JANSSEN



Sisters, love the game!



Maximum effort!



Madeline signs her national letter of intent pitch for the DMACC Bears!

JANSSEN JUNIOR SIRES



JANSSEN RAINMAKER - Reference Sire A

- The \$20,000 top-selling bull of the 2019 Janssen Production Sale to the Alta Genetics AI Stud.
- This bull combines a modest individual birth ratio of 82 with individual weaning ratio of 110 from a solid heritage of calving-ease genetics.
- His sire, SAV Rainfall 6846, is the most widely used member of the Select Sires AI Stud who was the \$460,000 second top-selling bull of the 2017 SAV Sale.
- The Pathfinder Dam of this bull balances a progeny birth ratio of 91 with a progeny weaning ratio of 102 on five calves along with a progeny IMF and ribeye ratios of 105 and 103 respectively on three head.



JANSSEN EMBLYNETTE 4525 - Pathfinder Dam of Reference Sire A.

A JANSSEN RAINMAKER [AMF-CAF-D2F-DDF-M1F-NHF-OHF-OSF-RDF]

Birth Date: 01-05-2018

Bull *19272440

Tattoo: 8013

#*Coleman Charlo 0256
*SAV Rainfall 6846
18578963 *SAV Blackcap May 4136

#*OCC Paxton 730P
+Bohi Abigale 6014
#SAV 8180 Traveler 004
#*SAV May 2397

ANGUS
#*SAV Hesston 2217
#Janssen Emblynette 4525
17926409 +SAV Emblynette 0775

#*SAV Harvester 0338
+SAV Emblynette 3301
#*SAV Final Answer 0035
+EA Emblynette 104

BW	WW	YW	SC	DOC	MILK	CW	MB	RE	\$W	\$C
-8	+65	+112	+.49	+10	+29	+48	+.77	+.79	+.79	+267

B LT ADVANTAGE 8382 [AMF-CAF-D2F-DDF-M1F-NHF-OHF-OSF-RDF]

Birth Date: 03-31-2018

Bull *19251572

Tattoo: 8382

#*Koupal Advance 28
LT Mission 5041
18316874 #LT Nordica 3075

ANGUS
#TC Aberdeen 759
LT Blackbird 9308
16463871 LT Blackbird 6152

#Koupal Juneau 797
*Koupal Ebonette 734
#*Connealy Earnan 076E
LT Nordica 0082

#CRA Bextor 872 5205 608
#*TC Blackbird 4034
#KCF Bennett Total
LT Blackbird Bando 3054

BW	WW	YW	SC	DOC	MILK	CW	MB	RE	\$W	\$C
+8	+67	+112	+.30	+5	+26	+44	+.71	+.70	+.73	+236



LT ADVANTAGE 8382 - Reference Sire B

- The Janssen junior herd sire who recently joined the Beef 360 AI organization after being selected by Jon Janssen as a favorite of the 2019 Lindskov-Thiel Sale in South Dakota.
- This powerful individual is sired by a son of the famous Pathfinder Sire Koupal Advance 28.
- The dam of this bull is a highlight of the Lindskov-Thiel herd backed by the Genex Pathfinders Sires TC Aberdeen 759 and KCF Bennett Total.



LT BLACKBIRD 9308 - Dam of Reference Sire B.

JANSSEN JUNIOR SIRES

- The Janssen junior herd sire selected as the top-selling bull of the 2019 Payne Angus Sale from the mating of the Genex Pathfinder Sire SAV Resource 1441 with the high income producing Pathfinder Dam AC Duke Girl 57.
- His \$31,000 full brother SAV Don Pepe 4443, served as a Janssen herd sire while their full sister produced the \$65,000 SAV Exceptional 7279.
- Another full sister was the \$22,000 top-selling Lot 1 heifer of the 2018 Payne Sale while a maternal sister was the \$27,500 top-selling Lot 1 heifer of the 2019 Payne Sale, and other maternal siblings include the Semex sire SAV Revere 1180, the ABS Global sire SAV Solid Gold 9187, and the herd sire producing Pathfinder Dam SAV Duke Girl 7348.



AC DUKE GIRL 57 - Pathfinder Dam of Reference Sire C



PAYNE FUNDAMENTAL 7137 - Reference Sire C

C PAYNE FUNDAMENTAL 7137

Birth Date: 09-26-2017

Bull +*19155123

Tattoo: 7137

+Rito 707 of Ideal 3407 7075
 #*SAV Resource 1441
 17016597 #*SAV Blackcap May 4136
 ANGUSGS
 #AC Duke Girl 57
 15180024 #AC Duke Girl 330

#RR Rito 707
 Ideal 3407 of 1418 076
 #SAV 8180 Traveler 004
 #*SAV May 2397
 #Car Tracker 904
 +CAR Miss Julie 643
 CT Miner 308
 AC Duke Girl 618

BW	WW	YW	SC	DOC	MILK	CW	MB	RE	\$W	\$C
+3.6	+56	+118	+5.0	+18	+31	+50	+11	+43	+50	+195

D TOPP REPUBLIC 8062

Birth Date: 01-12-2018

Bull +*19223930

Tattoo: 8062

#*Sitz Investment 660Z
 *SVA The Donald 4030
 17917143 #SVA Eileen 9051
 ANGUSGS
 #*Mohnen Wolf Creek 1871
 +TA Forever 3738
 17963906 TC Forever 6123

#*Connealy Final Product
 #*Sitz Ellunas Elite 656T
 #*SAV Final Answer 0035
 SVA Eileen 7015
 #*HA Image Maker 0415
 Mohnen Jilt 1283
 #*TC Grid Topper 355
 TC Forever 1004

BW	WW	YW	SC	DOC	MILK	CW	MB	RE	\$W	\$C
+3.2	+76	+144	+8.5	+32	+24	+65	+46	+52	+67	+264

- The Janssen junior herd sire selected as the co-second top-selling bull of the 2019 Topp Sale in North Dakota where his flush sister was the top-selling female also selected by Janssen Angus.
- This outstanding individual features an elite EPD profile by the Topp herd Sire SVA The Donald 4030 from an outstanding donor dam by the proven sire Mohnen Wolf Creek 1871.
- The dam of this bull is a maternal sister to the Select Sires Pathfinder Sire TC Thunder 805.



TA FOREVER 3738 - Dam of Reference Sire D



TOPP REPUBLIC 8062 - Reference Sire D



Sale Managers
TOM BURKE, KURT SCHAFF, JEREMY HAAG

AMERICAN ANGUS HALL OF FAME
at the WORLD ANGUS HEADQUARTERS
Box 660, Smithville, MO 64089-0660.
Phone: (816) 532-0811
Fax: (816) 532-0851
E-mail angushall@angushall.com
www.angushall.com

PRSR
FIRST-CLASS
U.S. POSTAGE
PAID
St. Joseph, MO
Permit #2017

Angus Bull Sale

Saturday • February 20, 2021 • Noon
At the Janssen Angus Sale Headquarters
1070 Pitzer Road, Earlham, IA 50072

JANSSEN AI SIRES



SAV PRESIDENT 6847 - The \$750,000 one-time world record-selling bull who sired the current world record-selling bull.



SAV AMERICA 8018 - The \$1.51 million current world record-selling bull.



SAV RAINFALL 6846 - The \$460,00 second top-selling bull from the all-time world record-selling flush of bulls.



SAV TERRITORY 7225 - The \$230,000 second top-selling Lot 1 bull of the 2018 SAV Sale featured in the ST Genetics AI Stud.



WOODHILL BLUEPRINT - The \$50,000 member of the Select Sires AI Stud who was the top-selling Lot 1 bull of the 2018 Woodhill Sale.



DEER VALLEY GROWTH FUND - One of the most popular members of the Select Sires AI Stud, sired by Basin Payweight 1682.



SAV EMBLEM 8074 - The \$175,000 co-second top-selling bull of the 2019 SAV Sale.



SAV EXPERTISE 7028 - The \$100,000 second leadoff bull of the 2018 SAV Sale in the Genex AI stud.



SAV ELATION 7899 - The \$800,000 one-time world record-selling bull from the 2018 SAV Sale.